



**САМАРСКИЙ УНИВЕРСИТЕТ**  
SAMARA UNIVERSITY




National Centre for  
Public Accreditation

# SUMMARY REPORT

on International Accreditation  
of the cluster of study programmes  
in the fields of study:

- «Philology» (45.03.01, 45.04.01),
- programme of further education «Teaching Russian as a Foreign Language»

delivered by Samara National Research University



2017

While preparing this Summary Report we used information from the Self-Evaluation Report and the Report on the External Review of the cluster of study programmes in the fields of study: «Philology» (45.03.01, 45.04.01), programme of further education «Teaching Russian as a Foreign Language» delivered by Samara National Research University.

The presentation document for the use by the National Accreditation Board.

## CONTENTS

---

General information on educational institution.....	4
Information on the study programmes undergoing accreditation	5
Achievements of the study programmes.....	7
External review panel.....	10
Good practice.....	12
Recommendations .....	15
Distribution digram of the external review outcomes.....	17
Conclusion of the external review panel.....	18
Schedule of the site visit of the external review panel .....	19

## GENERAL INFORMATION ON EDUCATIONAL INSTITUTION

Full name of the educational institution	<i>Federal State Autonomous Educational Institution of Higher Education "Samara National Research University"</i>	
Founders	<i>Ministry of Education and Science of the Russian Federation</i>	
Year of foundation	<i>1942 – Kuibyshev Aviation Institute</i>	
	<i>1966 – Kuibyshev Aviation Institute named after academician S.P. Korolev</i>	
	<i>1967 – Order of Red Banner of Labor Kuibyshev Aviation Institute</i>	
	<i>1991 – Samara order of Red Banner of Labor Kuibyshev Aviation Institute named after academician S.P. Korolev</i>	
	<i>1992 – Samara State Aerospace University named after academician S.P. Korolev</i>	
	<i>2010 – Samara State Aerospace University named after academician S.P. Korolev (National Research University)</i>	
	<i>2016 – Samara National Research University named after academician S.P. Korolev</i>	
Location	<i>443086, 34, Moskovskoye Shosse, Samara, Samara Region, Russian Federation</i>	
Rector	<i>Shakhmatov Evgeny, Doctor of Sciences, Professor</i>	
License	<i>Series 90Л01 № 9264 reg. № 2222 dated 28.06.2016 permanent</i>	
State Accreditation	<i>Certificate of State Accreditation Series 90A01 № 2372, reg. №2251 dated 20.09.2016 valid till 31.05.2019</i>	
Number of students	<i>14467</i>	
	<i>among them:</i>	
	<i>Full-time</i>	<i>10545</i>
	<i>On-site and off-site</i>	<i>615</i>
	<i>Part-time</i>	<i>3307</i>

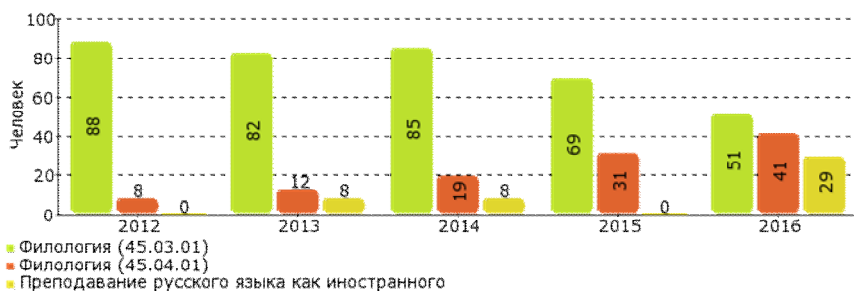
## INFORMATION ON THE STUDY PROGRAMMES UNDERGOING ACCREDITATION

Study programmes	«Philology» (45.03.01) , «Philology» (45.04.01) , «Teaching Russian as a Foreign Language»
Level of training/ Standard period of training	academic bachelor's degree programme / 4 years master's degree programme / 2 years further education programme / 250 hours
Structural subdivisions (Head)	<i>Institute of Social Sciences and Humanities</i> (Victor Kuznetsov, Candidate of Philology) <i>The Faculty of Philology and Journalism</i> (Anna Bezrukova, Candidate of Philology)
Major departments (heads of major departments)	<i>Department of the Russian Language and Mass Communication</i> (Nadezhda Ilukhina, Doctor of Philology, Professor) <i>Department of Russian and Western Literature and Public Relations</i> (Golubkov Sergey, Doctor of Philology, Professor) <i>Department of English Philology</i> (Vyacheslav Shevchenko, Doctor of Philology, Associate Professor) <i>Department of German Philology</i> (Sergey Dubinin, Doctor of Philology, Professor)
Date of the site visit	October 25-27, 2016
People responsible for accreditation of the study programme	<i>Mikhail Leonov, Doctor of Historical Sciences, Associate Professor, Deputy Director of the Institute of Social Sciences and Humanities</i>

## SAMPLING RESULTS OF THE PROJECT "THE BEST STUDY PROGRAMMES OF INNOVATIVE RUSSIA"

Indicators	2016
<b>Cluster of the study programmes in the fields of study: "Philology" (45.03.01, 45.04.01)</b>	
Number of the given programmes in the RF	223
Number of higher educational institutions to offer the given programmes	109
Number of programmes – winners of the project (% from total number of these programmes offered in the RF)	84 (37,67%)
<b>Samara Region</b>	
Number of the given programmes offered in the region	13
Number of programmes – winners of the project (% from total number of these programmes offered in the region)	4 (30,77%)
Number of higher educational institutions and branches in the region	41
Total number of programmes offered in the region	591
Total number of programmes – winners of the project (% from total number of these programmes offered in the region)	111 (18,78%)

## REFERENCE DATA ON STUDENT ENROLLMENT FOR PROGRAMME



## **ACHIEVEMENTS OF THE STUDY PROGRAMMES**

### **Quality of implementing the study programme**

The quality of educational programmes is ensured by a high qualification level of the teaching staff and active research work of the teachers; wide international connections, close cooperation with employers and the use of e-learning technologies.

### **Provision of up-to-date education**

Research findings are implemented in the teaching process on a regular basis: the Faculty teachers develop new special and elective courses taking into account recent research activity. The present lecture courses and practical classes are being updated, syllabi are reviewed.

The teachers conduct methodological work, develop learning materials with the use of information technologies.

### **Teaching staff**

The teaching staff of the faculty comprises 74 people (including part time employees); out of this number 59 people (79,7 %) are academic degree holders; Doctors of Sciences, Professors – 19 (25,7 %), staff members; Candidate of Sciences, Associate professors – 40 (54,0 %) staff members.

Area of expertise, academic degrees and titles, work experience fully comply with the programmes' profile of Philology.

### **Independent assessment of student learning outcomes**

The assessment of student learning outcomes is carried out on a regular basis; since 2011 such technologies as "Diagnostic assessment of the 1<sup>st</sup> year students" and the "Federal Internet Exam in Professional Education" have been implemented in the assessment procedure.

The students of the Faculty of Philology take an active part in competitions, carried out by off-site educational institutions, and receive high marks of the learning outcomes, which are confirmed by Certificates and letters of appreciation.

### **Material and technical resources**

The classes of the study programmes of the cluster "Philology" are delivered in the buildings of the Faculties of Chemistry and Biology, classrooms and laboratories are equipped with multi-media facilities in accordance with the FSES HE requirements. The computer classrooms are equipped with modern computers with broadband Internet access. License software programmes are used in carrying out special modules.

A branch of the Samara University library is stationed in the building of the Faculty. The library stock comprises about two million copies of books and periodicals; an access to full text information resources is provided on the basis of agreements with the copyright holders (lib.ssau.ru/).

Samara University supports the usage of innovative teaching methods and advanced technologies. The study programme "Philology" achieved good results in the application of distance courses on the Moodle platform.

### Research activity

The teachers of the Faculty of Philology are actively engaged in research work: they supervise post graduate students, are members of Dissertation Councils, defend theses, publish research works, have high citation indexes in RSCI, participate in conferences.

The teachers' research activity manifests itself in publishing monographs, articles in journals and proceedings of conferences; executing commissioned research work. The total amount of research funding of the faculty's departments came up to 1 648,000 rub. in 2012; 2 274,500 rub. in 2013; 645,000 in 2014; 925,000 in 2015; 700,000 in 2016.

Systemic and consistent work is organized on involving students in research activity, developing their research culture and facilitating their academic achievements.

### Academic mobility of students

During the last five years a considerable number of students from Philological faculty have taken part in international educational projects and competitions.

An agreement on implementing the Master's double degree programme "The Russian Language and Communication in the Professional Sphere" has been reached between the Department of the Russian Language and Mass communication of Samara University and the University of Würzburg. The programme director on the Russian side is Professor N. Ilyukhina part, on the German side Professor Ebbinghaus.

Academic mobility programmes are implemented on the basis of long term agreements on cooperation with international HEIs and companies.

### Employability of graduates

Information on employability of the University graduates of the study programme Philology published at the web-site the Portal of monitoring graduate employment ([graduate.edu.ru](http://graduate.edu.ru)), demonstrates a high-level of the students' employability

The Faculty of Philology of Samara University is engaged in fruitful cooperation with the Ministry of Education and Science of Samara Region and media representatives on the issues of graduates employability.

### International projects

The teachers of the Faculty of Philology take part in foreign internships, implement joint research projects with foreign companies.

At present the work on three projects is under way: the project «Dynamic processes in modern Russian at the turn of the century» under



the supervision of Professor N. Ilyukhina (Samara University) and DR. Helena Dieser (Julius-Maximilians-Universität Würzburg); the project «The Study of Russian advertisement in comparison with German advertisement» under the supervision of T. Romanova, Associate professor (Samara University) and Stephanie Schwartz (Julius-Maximilians-Universität Würzburg). The project «Modern media of FRG» together with Deutsche Welle" (Russian office) is supported by the teachers of the Department of German Philology (Head of the Department Professor S. Dubinin).

## EXTERNAL REVIEW PANEL



**Tadeush Pioyrovsky** (Poland)

Review Chair, international expert

*Doctor of Philology, Professor, Institute for the English Language and Culture, University of Wrocław*

Nominated by Polish Accreditation Commission (PKA)



**Elena Naumova** (Russia)

Deputy Review Chair, Russian expert

*Candidate of Philology, Associate Professor, First Vice Rector of The Linguistic University of Nizhny Novgorod*

nominated by the Guild of Experts in Higher Education



**Irina Belobrovtsseva** (Estonia)

Panel member, international expert

*Professor of Russian Literature, the Institute for Humanities, Tallinn University*

nominated by the Guild of Experts in Higher Education

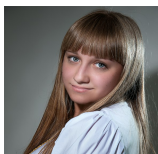


**Yelena Tyulakova** (Russia)

Panel member, representative of professional community, Russian Expert

*Candidate of Pedagogical Sciences, Consultant at the Department for professional Education, science and human resourcing at the Ministry of Education and Science of Samara Region*

Nominated by the Ministry of Education and Science of Samara Region



**Alena Mechkaeva** (Russia)

Panel member, representative of student society, Russian Expert

*4th year student of the Philological Faculty, Samara State Social Pedagogical University*

Nominated by Samara State Social Pedagogical University

## INFORMATION ON THE LEADING TEACHERS OF THE STUDY PROGRAMME

### **Sergey Golubkov**

*Doctor of Philology, Professor, Head of the Department of Russian and Foreign Literature and Public Relations; Honored Worker of Higher Professional Education of the RF*

### **Nina Danilova**

*Doctor of Philology, Professor, Head of the Department of Germanic Philology, Honored Worker of Higher Professional Education of the RF; Member of Dissertation Councils in Philology at Samara University; Presidium Member of the Russian Union of German Philologists*

### **Sergey Dubinin**

*Doctor of Philology, Professor, Head of the Department of German Philology, Honored Worker of Higher Professional Education of the RF; Member of Dissertation Councils in Philology at Samara University; Member of the Russian Union of German Philologists*

### **Nadezhda Ilyukhina**

*Doctor of Philology, Professor, Head of the Department of the Russian Language and Mass Communication, Honored Worker of Higher Professional Education of the RF, Member of Dissertation Councils in Philology, member of Academic Council of Samara State University*

### **Ludmila Karpenko**

*Doctor of Philology, Professor at the Department of the Russian Language and Mass Communication*

### **Mikhail Perepelkin**

*Doctor of Philology, Professor at the Department, of Russian and Foreign Literature and Public Relations, member of the Journalists Union of the Russian Federation*

### **Nikolay Rymar**

*Doctor of Philology, Professor, Head of the Department of Russian and Foreign Literature and Public Relations; Honored Worker of Higher Professional Education of the RF, Board member of the Russian Union of German Philologists*

### **Antonina Kharkovskaya**

*Candidate of Philology, Professor at the Department of English Philology; Honored Worker of Higher Professional Education of the RF; member of the editorial board of Russian Journal of Communication (Routledge Taylor & Francis Group, ISSN 1940-9419)*

## GOOD PRACTICE

### **Standard 1. Policy (goals, development strategy) and quality assurance procedures of a study programme**

The University is a participant of the competition «5-100»; it takes the 26<sup>th</sup> place in the ranking «100 best HEIs of Russia».

Availability of the certified quality management system is.

Availability of specialized structures for introducing inner quality assurance system communicating with the persons responsible for quality at the Philological Faculty and relevant staff members at each department.

Availability of regulated and documented procedures for involving the structural units of the University in the quality assurance system of the study programme

Orientation of the study programmes to the regional requirements of the labour market.

### **Standard 2. Design and approval of programmes**

Availability and accessibility of documented, approved and published goals of the study programmes and expected learning outcomes. Conducting marketing research of the labour market demands when developing new study programmes.

Systematic reviewing of the study programmes (including redesigning syllabi).

Adjusting the study programmes with the consideration of their demand.

Development of the Master's double degree programme «The Russian Language and Communication in the professional sphere» in cooperation with (Julius-Maximilians-Universität Würzburg).

### **Standard 3. Student-centred learning, teaching and assessment**

Availability of the Centre for Inclusive Education in the University structure.

Availability of adaptive disciplines for persons with special needs.

The usage of adaptive teaching technologies for special needs persons.

Flexibility of assessment of student learning outcomes through the usage of point-rating system.

### **Standard 4. Student admission, support of academic achievements and graduation**

Availability of a system for identifying and supporting talented children and youth through subject specific competitions and Olympiads.

Systematic and diverse work with applicants is carried out.

Systematic work is carried out in order to involve students in research.

The procedures of collecting and analyzing information on academic achievements with the purpose of financial and non-financial incentives are in place.

### **Standard 5. Teaching staff**

High level of qualification of the teaching staff (82% of the teachers are academic degree holders).

High publishing activity of the teaching staff.

Research results are implemented in the teaching process.

Participation of the teaching staff in joint international projects.

Visiting lectures from other HEIs are involved in the academic process.

Availability of an incentive system introduced by the University and Faculty administration.

### **Standard 6. Learning resources and student support**

The University has a licensed access to full text international data bases: journals issued Taylor&Francis, journal Scienceonline.

The library staff actively support teachers and students in finding necessary books through personal accounts in the system 1-C University.

The library's internet resources are actively used for research purposes.

A centre for inclusive education is in place.

There is a Student Council at the University.

### **Standard 7. Collection, analysis and use of information for managing the study programme**

Transition to the united integrated system of university management on the platform «1C: University».

Electronic document flow system is introduced.

The students and staff of the University are involved in collecting and analyzing information for the programme managing.

### **Standard 8. Public information**

Mass media are regularly used for informing stakeholders about the study programmes under accreditation, about their achievements and plans for development.

The press service of the University is closely cooperating with the regional mass media.

The Faculty of Philology and the Departments have special sections at the University website.

The section "For graduates" contains information on the labour market monitoring and information about the graduates employability.

### **Standard 9. On-going monitoring and periodic review of programmes**

Availability of regulated by the local acts procedures of monitoring the study programmes.

A mechanism is in place for providing feedback from stakeholders.

### **Standard 10. Cyclical external quality assurance of study programmes**

Regular independent external reviewing of the study programmes.

Students are successful in subject specific Olympiads and competitions at international, national and regional levels.

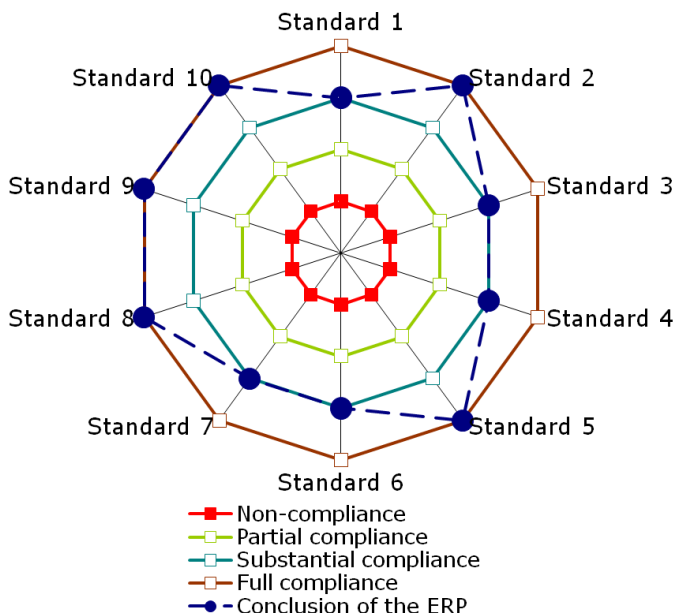
## RECOMMENDATIONS

1. It is recommended that students should be included in the University committees on quality assurance of education.
2. The local normative and legal documentation on the procedures of involving structural subdivisions of the University in the quality assurance system should be made current.
3. Employers should be more regularly involved in developing and assessment of the syllabi and assessment tools; materials provided by employers should be used for forming cases and developing projects within the framework of study disciplines.
4. It is advisable that the range of elective courses be expanded with the account of the students' needs.
5. The point ranking system of the Philological Faculty should be unified.
6. The practice of inclusive education in the partner Universities within the framework of academic mobility should be more actively used. The study periods and the acquired disciplines should be recognized provided that interim attestation in the foreign partner university was successfully passed.
7. It is recommended that the module curricula of study programmes should be developed in order to enhance academic mobility.
8. In order to facilitate the export of educational services it would be advisable that master's programme be developed in English.
9. The practice of issuing the Diploma Supplement upon the graduate's request should be renewed.
10. The information about the delivered study programmes in English and German should be placed on the University's websites.
11. It might be necessary to enlarge the list of foreign languages in the programmes under accreditation with the consideration of the marketing research.
12. A system for support of young researchers should be developed in order to preserve and expand the traditions of research schools at the Faculty of Philology.
13. The work on developing electronic educational resources and their placement in the Moodle platform should be enhanced.
14. It is necessary to complete the process of introducing the common information system.
15. The Panel suggests that proprietor open educational courses on the platforms recommended in section 10 of the Regulations on the incentive system for employers of Samara University should be tested.
16. It is necessary that the content of the section *Employment* on the University website should be updated with the consideration of the outcomes of the employment monitoring of the Faculty's graduates.

17. The Panel thinks it necessary to consider the opportunity of placing feedback from students and graduates on the quality of training and employability on the Faculty's website.
18. It is recommended that advertising materials about the Faculty of Philology be developed in English.
19. The information about syllabi on the University websites including the English version should be updated.
20. It is recommended that a mechanism of involving graduates in monitoring study programmes on a regular basis should be developed.
21. In order to enhance the study programmes communication with employers, to include the graduates of the Faculty of Philology, should be more systematic.
22. The Panel think it necessary to expand the list of further education professional programmes with the consideration of the results of marketing research.
23. It might be beneficial to consider the increase of the proportion of work placement in the study programmes.



## DISTRIBUTION DIGRAM OF THE EXTERNAL REVIEW OUTCOMES



- |              |  |
|--------------|--|
| Standard 1.  | Policy (goals, development strategy) and quality assurance procedures of a study programme |
| Standard 2.  | Design and approval of programmes  |
| Standard 3.  | Student-centred learning, teaching and assessment  |
| Standard 4.  | Student admission, support of academic achievements and graduation                         |
| Standard 5.  | Teaching staff   |
| Standard 6.  | Learning resources and student support   |
| Standard 7.  | Collection, analysis and use of information for managing the study programme               |
| Standard 8.  | Public information   |
| Standard 9.  | On-going monitoring and periodic review of programmes                                      |
| Standard 10. | Cyclical external quality assurance of study programmes                                    |

## CONCLUSION OF THE EXTERNAL REVIEW PANEL

Based on the self-evaluation report analysis, documents and data submitted, interviews with the representatives of the professional communities, students, post graduates, doctor-degree students, staff and administration of the educational institution the External Review Panel came to the conclusion that the cluster of educational programmes in the field of study: «Philology» (45.03.01, 45.04.01), programme of further education «Teaching Russian as a Foreign Language» **substantially** complies with the standards and criteria of public accreditation of the National Centre for Public Accreditation.

The External Review Panel recommends that the National Accreditation Board **accredit the cluster of educational programmes in the field of study: «Philology» (45.03.01, 45.04.01), programme of further education «Teaching Russian as a Foreign Language» delivered by Samara National Research University for the period of 6 years.**

## SCHEDULE OF THE SITE VISIT OF THE EXTERNAL REVIEW PANEL

Time	Events	Participants	Venue
<b>25 October, Tuesday</b>			
08.30	Meeting the members of ERP in the airport		"Green Line Hotel"
08.45	Arriving at Samara State		1, Academic Pavlov Str.. Room Л-13
09.00 – 11.00	The first meeting of ERP and HEI's coordinators Briefing of experts.		1, Academic Pavlov Str.. Room Л-13
11.00 – 12.00	<b>Meeting with the University administration and persons in charge of accreditation</b>	ERP, Rector, Vice-Rectors, Chiefs of the Academic Process Management Directorate, Director of the Centre for Quality Assessment in Education, Director of the Institutes, deans, heads of departments	1, Academic Pavlov Str.. Assembly Hall
12.00 – 13.30	Lunch		49 Academic Platonov Str Café Favourite
13.30 – 15.00	Guided tour of the University	ERP	1, Academic Pavlov Str.. 49 Academic Platonov Str
15.00 – 16.00	<b>Meeting with the Director and Deputy Director of the Institute of Social Sciences and Humanities, Dean of the Faculty of Philology</b>	Director of the Institute of Social Sciences and Humanities, Dean of the Faculty of Philology	64 Potapov Str.. Room 306
16.00 – 16.30	Break		64 Potapov Str.. Room 308
16.30 – 17.30	<b>Meeting with the heads of Departments</b>	Heads of Departments, ERP	64 Potapov Str.. Room 306
17.30 – 18.00	Work with documents	ERP	64 Potapov Str.. Room 306
18.00 – 19.00	<b>Meeting with representatives of the professional community</b>	Employers, ERP	64 Potapov Str.. Room 306
19.00 – 19.30	Internal meeting of ERP	ERP	
<b>26 October, Wednesday</b>			
08.30	Transfer to the University		
08.45	Arrival at Samara University		1, Academic Pavlov Str..

			Room Л-13
09.00 – 10.00	<b>Meeting with students</b>	Students, ERP	64 Potapov Str.. Room 306
10.00 – 11.30	Work with documents	ERP	64 Potapov Str.. Room 308
11.30 – 12.30	<b>Meeting with the Teachers</b>	Teachers, ERP	64 Potapov Str.. Room 306
12.30 – 14.00	Lunch		49 Academic Platonov Str Café Favourite
14.00 – 14.30	<b>Meeting with the students of the further education programme</b>	Students, ERP	64 Potapov Str.. Room 306
14.30 – 16.30	Work with documents	ERP	64 Potapov Str.. Room 308
16.30 – 17.30	<b>Meeting with graduates</b>	Graduates, ERP	64 Potapov Str.. Room 306
17.30 – 18.00	Internal meeting of ERP	ERP	64 Potapov Str.. Room 308
<b>27 October, Thursday</b>			
08.45	Arrival at Samara University		1, Academic Pavlov Str.. Room Л-13
09.00 – 12.00	Closed meeting of the panel: making preliminary conclusions of the site visit, preparing the oral commission report on the results	ERP	1, Academic Pavlov Str.. Room Л-13
12.00 – 13.30	Lunch		49 Academic Platonov Str Café Favourite
13.30 – 15.00	<b>Final meeting of External Review Panel with the representatives of the University's administration heads of departments, teachers, students</b>	ERP, the representatives of the university administration, Heads of the degree-granting departments, teachers, students	1, Academic Pavlov Str.. Assembly Hall
	Departure of the External Review Panel		