

Decision of the FIBAA Accreditation and Certification Committee



20th Meeting on November 26, 2025

PROGRAMME ACCREDITATION

Project Number:	23/051 Cl. 1
Higher Education Institution:	Institut Seni Indonesia (ISI) Padangpanjang, ISI Padang, Indonesia
Location:	Padangpanjang, West Sumatra, Indonesia
Study programme:	Music Study Programme (Music) Karawitan Arts Study Programme (Karawitan Arts)
Type of accreditation:	initial accreditation

During its meeting, the FIBAA Accreditation and Certification Committee decided to lift Conditions 1 and 2 for all study programmes. The Committee concluded that these conditions can be formally regarded as fulfilled on the basis of the documents submitted together with the HEI's statement.

However, Conditions 3 to 6 remain in place, as the submitted documents are insufficient in this respect.

Thus, according to § 7 (6) in conjunction with § 9 (1) of the FIBAA General Terms and Conditions within the framework of procedures for the award of the FIBAA Quality Seal for Programmes from January 1st, 2021, the study programmes are accredited with four conditions.

- **Condition 1 (see chapter 3.3.2):** The HEI updates course material references and reviews them annually to ensure alignment with the intended learning outcomes, qualification level, and academic standards
- **Condition 2 (see chapter 3.4.1):** The HEI develops and implements a strategy to integrate international perspectives into the curriculum, preparing students to demonstrate and explain their work in an international context, and ensuring mechanisms for regular review and continuous improvement
- **Condition 3 (see chapter 4.4.1):** The HEI develops a concept to improve barrier-free access for disabled students and to ensure that teaching and group rooms are adequately equipped in accordance with accessibility standards. In addition, it is recommended that the room acoustics of the facilities used by the Music Study Programme be improved.
- **Condition 4 (see chapter 5.1):** The HEI pays greater attention to the implementation and communication of quality assurance procedures, particularly with regard to student workload in satisfaction surveys. Clear regulations must ensure anonymous student feedback and provide a structured follow-up process for lecturers based on the survey results

Proof of meeting these conditions is to be supplied by August 25, 2026.

Period of Accreditation: November 26, 2025 to November 25, 2030.

The FIBAA Quality Seal is awarded.

Originally, the panel recommend to the FIBAA Accreditation and Certification Committee the following decision:

According to § 7 (6) in conjunction with § 9 (1) of the FIBAA General Terms and Conditions within the framework of procedures for the award of the FIBAA Quality Seal for Programmes from January 1st, 2021, the study programmes are accredited with six conditions.

- **Condition 1** (see chapter 2.5): The HEI provides preparatory English courses from the beginning of the programmes, enabling students to achieve a minimum TOEFL score of 400 and acquire the language skills necessary for the successful completion of their studies
- **Condition 2** (see chapter 3.1.2): The HEI consistently uses the following English programme titles (in international contexts, websites and academic exchanges):
 - Music
 - Karawitan Arts
- **Condition 3** (see chapter 3.3.2): The HEI updates course material references and reviews them annually to ensure alignment with the intended learning outcomes, qualification level, and academic standards
- **Condition 4** (see chapter 3.4.1): The HEI develops and implements a strategy to integrate international perspectives into the curriculum, preparing students to demonstrate and explain their work in an international context, and ensuring mechanisms for regular review and continuous improvement
- **Condition 5** (see chapter 4.4.1): The HEI develops a concept to improve barrier-free access for disabled students and to ensure that teaching and group rooms are adequately equipped in accordance with accessibility standards. In addition, it is recommended that the room acoustics of the facilities used by the Music Study Programme be improved.
- **Condition 6** (see chapter 5.1): The HEI pays greater attention to the implementation and communication of quality assurance procedures, particularly with regard to student workload in satisfaction surveys. Clear regulations must ensure anonymous student feedback and provide a structured follow-up process for lecturers based on the survey results

Proof of meeting these conditions is to be supplied by August 25, 2026.

Period of Accreditation: November 26, 2025 to November 25, 2030.

The FIBAA Quality Seal is awarded.

Assessment Report

Higher Education Institution:

Institut Seni Indonesia (ISI)
Padangpanjang, ISI Padang, Indonesia

Bachelor programmes (Cluster 1):

Music Study Programme (Music)
Karawitan Arts Study Programme (Karawitan Arts)

Qualification awarded on completion:

Music: Sarjana Seni (S.Sn.)
Karawitan Arts: Sarjana Seni (S.Sn.)

General information on the study programme

Brief description of the study programme:

Music - Music Study Programme (MSP)

The Music Study Programme is a four-year bachelor's degree programme. The programme combines Western music techniques with the Malay and Archipelago (*Rumpun Melayu Nusantara*) musical traditions.

Students study performance, composition, and music theory while developing creative and analytical skills. Graduates work as musicians, composers, educators, and researchers in music institutions, cultural centres, and the creative industry.

Karawitan Arts - Karawitan Arts (KSP)

The Karawitan Arts Study Programme (or Karawitan Arts) is a four-year bachelor's degree programme. It focuses on the traditional musical arts of the Indonesian archipelago, combining theory and practice in *karawitan*. Students learn to perform, compose, and analyse various regional musical forms. Graduates become performers, educators, and researchers in cultural institutions, community organisations, and art centres, preserving the values of traditional Indonesian and Minangkabau Malay music.

A total of 144 SKS¹ are assigned for each programme for 4 years bachelor's degrees. Each programme comprises a total of 144 SKS, consisting of 9 for national courses, 9 for university courses, 9 for faculty courses, 97 for core courses and 20 for electives.

Type of study programme:

Bachelor programmes - Sarjana Seni (S.Sn.) for Music and Karawitan Arts

Projected study time and number of ECTS credits / national credits assigned to the study programme:

Music Study Programme: 4 years: 144 SKS credits/ 217 ECTS

Karawitan Arts Study Programme: 4 years: 144 SKS credits/ 217 ECTS

Mode of study:

full-time

Didactic approach:

study programme with obligatory class attendance

Double/Joint Degree programme:

no

Scope (planned number of parallel classes) and enrolment capacity:

Music: 80 students (2 classes)

Karawitan Arts: 80 students (2 classes)

Programme cycle starts in:

Odd semester (usually - from August)

Initial start of the programmes:

Music (MSP) and Karawitan Arts (KSP): 1980

Type of accreditation:

initial accreditation

¹ SKS: Satuan Kredit Semester or Semester Credit Units

Procedure

A contract for the initial accreditation of the Music and Karawitan Arts study programmes was made between FIBAA and Institut Seni Indonesia (ISI) Padangpanjang on August 29, 2023. On September 27, 2024, the HEI submitted a self-evaluation report, which included a detailed description of the programmes and further documents in order to prove that the criteria for programme accreditation are met.

At the same time, FIBAA appointed a review panel². The HEI has agreed with the chosen experts. The panel consisted of:

Benjamin Harasko
Joseph Haydn Private University, Austria
Masters: Art Song, Oratorio, Concert
Student of Vocal

Dr. Edi Dwi Riyanto
University of Airlangga
Associate Professor of Cultural Studies, especially Music and Ethnomusicology (Local and localities, Indigenous Music, Post-Colonial, Cultural Studies, Participatory Research and Community Development)

Dr. I Gde Made Indra Sadguna
Institut Seni Indonesia (ISI) Denpasar, Bali
Assistant Professor of Karawitan (Karawitan, Musicology)

Prof. Dr. Leon Stefanija
University of Ljubljana
Full Professor of Musicology (Musicology, Music Studies, Music Theory, Sociology of Music)

Dr. Razia Sultanova
Cambridge Muslim College
Research Fellow, Chair, ICTM Study Group on Global History of Music
(Musicology, Ethnomusicology, Performing Arts, Social Sciences)

FIBAA project manager:
Dr. Yelena Istileulova

The assessment is based on the self-evaluation report, amended by further documents, as requested by the panel, and on an on-site visit. The on-site visit took place on 18 and 19 June, 2025 at the Institut Seni Indonesia (ISI) Padangpanjang premises in Padangpanjang. The same cluster N1 included an appraisal of Music/Sarjana Seni (S.Sn.) and Karawitan Arts /Sarjana Seni (S.Sn.) At the end of the on-site visit, the panel has given short feedback on its first impressions to representatives of the HEI.

The assessment report based on this was delivered to the HEI for comment on November 7, 2025. The statement on the report was given up on November 14. It has been taken into account in the report at hand.

² The panel is presented in alphabetical order.

Summary

The Bachelor of Music and Bachelor of Karawitan Arts offered by Institut Seni Indonesia (ISI) Padangpanjang fulfils with few exceptions the FIBAA quality requirements for bachelor programmes and can be accredited by the Foundation for International Business Administration Accreditation (FIBAA) for five years starting on November 26, 2025 and finishing on November 25, 2030 under several conditions.

The programmes are in accordance with the national and the European Qualification Frameworks and the European Standards and Guidelines in their applicable version valid as of the time of the opening of the procedure, and in accordance with the Bologna Declaration.

The panel members identified need for improvement regarding the following aspects:³

- ensuring foreign-language proficiency so that students achieve a minimum TOEFL score of 400 by graduation (chapter 2.5); ensuring consistent use of English titles of the study programmes (chapter 3.1); updating course material's references (chapter 3.3.2); integrating international perspectives into the curriculum (chapter 3.4.1); improving accessibility and room conditions (chapter 4.4.1); and strengthening the implementation and communication of quality-assurance procedures (chapter 5.1).

Therefore, the panel members recommend accreditation for both Music and Karawitan Arts study programmes on condition of meeting the following requirements:

- **Condition 1** (see chapter 2.5): The HEI provides preparatory English courses from the beginning of the programmes, enabling students to achieve a minimum TOEFL score of 400 and acquire the language skills necessary for the successful completion of their studies
- **Condition 2** (see chapter 3.1.2): The HEI consistently uses the following English programme titles (in international contexts, websites and academic exchanges):
 - Music
 - Karawitan Arts
- **Condition 3** (see chapter 3.3.2): The HEI updates course material references and reviews them annually to ensure alignment with the intended learning outcomes, qualification level, and academic standards
- **Condition 4** (see chapter 3.4.1): The HEI develops and implements a strategy to integrate international perspectives into the curriculum, preparing students to demonstrate and explain their work in an international context, and ensuring mechanisms for regular review and continuous improvement
- **Condition 5** (see chapter 4.4.1): The HEI develops a concept to improve barrier-free access for disabled students and to ensure that teaching and group rooms are adequately equipped in accordance with accessibility standards. In addition, it is recommended that the room acoustics of the facilities used by the Music Study Programme be improved.
- **Condition 6** (see chapter 5.1): The HEI pays greater attention to the implementation and communication of quality assurance procedures, particularly with regard to student workload in satisfaction surveys. Clear regulations must ensure anonymous student feedback and provide a structured follow-up process for lecturers based on the survey results

³ These aspects are asterisk criteria which means that they are essential for the study programme.

Proof of meeting these conditions is to be submitted by August 25, 2026.

Furthermore, the quality requirements that have not been fulfilled for both programmes - equality of opportunity (see chapter 3.2.4); guest lecturers (see chapter 3.3.3); internationality of the student body (see chapter 3.4.2); internationality of the faculty (see chapter 3.4.3); and foreign-language contents for the Music programme (see chapter 3.4.4) - are not asterisk criteria and therefore do not lead to a condition.

The measures the HEI takes to solve the identified problems are to be considered during the re-accreditation.

The panel members also identified several areas where both programmes - Music and Karawitan Arts - could be further developed by:

- increasing the promotion of the Music and Karawitan Arts study programmes across various regions of Indonesia (see chapter 2.2)
- developing a pilot version of a Diploma Supplement in the coming period to support the international comparability of degrees (see chapter 3.2.2)
- formulating a clear definition of what constitutes a “guest lecturer” and inviting both local and international guest lecturers for the two programmes in order to enhance the qualification process through their professional, academic, cultural, or political expertise (see chapter 3.3.3)
- developing and implementing clear, goal-oriented approaches to enhance the international composition of the student body in line with the programme concept. This may include targeted recruitment, international partnerships, joint programmes, mobility schemes, and increased visibility through participation in international academic networks and conferences (see chapter 3.4.2)
- strengthening international collaboration to enhance the internationality of the faculty by promoting joint research projects with both local and foreign institutions and by encouraging lecturers and students to participate in international conferences and professional organisations (e.g., the International Council for Traditions of Music and Dance (ICTMD), the British Forum for Ethnomusicology (BFE), the Society for Ethnomusicology (SEM), the European Seminar in Ethnomusicology (ESEM), and the International Musicological Society (IMS)) (see chapter 3.4.3)
- encouraging and supporting lecturers in pursuing full professorships, as this would strengthen the academic qualifications of the teaching staff and aligning with the long-term objectives of the study programmes (see chapter 4.1.2)
- strengthening its career and placement services by organising job fairs, providing CV and application guidance, and expanding support measures to better prepare students and graduates for the labour market (see chapter 4.5.1)

For Music, the programme could be further developed by

- strengthening students’ language competencies to enable engagement with international literature relevant to the programme. The use of foreign languages in instruction and learning materials should also be better aligned with the programme’s qualification objectives (see chapter 3.4.4)

The measures that the HEI takes in order to implement the recommendations of the panel members will have to be considered during the re-accreditation. For the overall assessment of the programme, please refer to the quality profile at the end of this report.

Information

Information on the Institution

The **Institut Seni Indonesia (ISI) Padangpanjang** is a state Higher Education Institution (hereinafter - HEI) located in the city of Padangpanjang, West Sumatra. The history of ISI Padangpanjang began with the founding of the Indonesian Academy of Karawitan Arts (Akademi Seni Karawitan Indonesia, or ASKI Padangpanjang) in 1965, established through Ministerial Decree of the Minister of Primary Education and Culture Number 84 of 1965, dated 22 December 1965.

ISI Padangpanjang was established under Presidential Regulation No. 60 of 2009, transforming the Indonesian College of the Arts (STSI) into the Indonesian Institute of the Arts (ISI) effective 1 January 2010. HEI offers a broad range of study programmes across undergraduate (S1), master's (S2) and doctoral (S3) levels, as well as Applied Bachelor's degree diploma (D4) tracks. It has two faculties: Faculty of Performing Arts and Faculty of Fine Arts & Design. There are 27 study programmes, 4040 students, 257 lecturers (30 – doctors, 61 – Associate professors, and two (2) full professors), 102 postgraduate students.

Music Study Programme (MSP): This programme (S1) emphasises mastery of conventional (Western) music techniques alongside the repertoire of the Malay/Archipelago tradition, preparing students to be musicians, composers or researchers in music. The programme, under the Faculty of Performing Arts, was formally inaugurated on 9 January 2001.

Karawitan Arts Study Programme (KSP): This programme (S1) focuses on the traditional musical arts of the archipelago (musik nusantara), combining theoretical and practical approaches to karawitan. The programme was officially opened under the Director-General's Decree No. 348/DIKTI/Kep/1998, dated 24 September 1998.

The ISI Padangpanjang has the following vision and missions.

Vision: To become a leading and globally competitive higher education institution (HEI) that produces scholars and entrepreneurs grounded in art and culture by the year 2044.

Missions:

- To provide high-quality, character-based, and sustainable education through the implementation of the *Merdeka Belajar* (Freedom to Learn) framework, in order to produce excellent graduates.
- To conduct high-quality, relevant, and competitive research and community service in line with developments in science and technology, with both national and international dissemination.
- To deliver community service aimed at improving public welfare through the transfer of knowledge and the diffusion of technological innovation.
- To strengthen, enhance, and develop institutional capacity.
- To establish and expand national and international collaborations.
- To implement effective and transparent university governance based on information technology.
- To develop centres of excellence in the arts, culture, and creative innovation.
- To produce graduates with an entrepreneurial spirit.
- To have the competence of academic and administrative staff in a professional manner.
- To cultivate the character of the academic community and staff based on the values of *Pancasila*.

Organisational Structure of the Faculty of Performing Arts and the position of the Music and Karawitan Arts

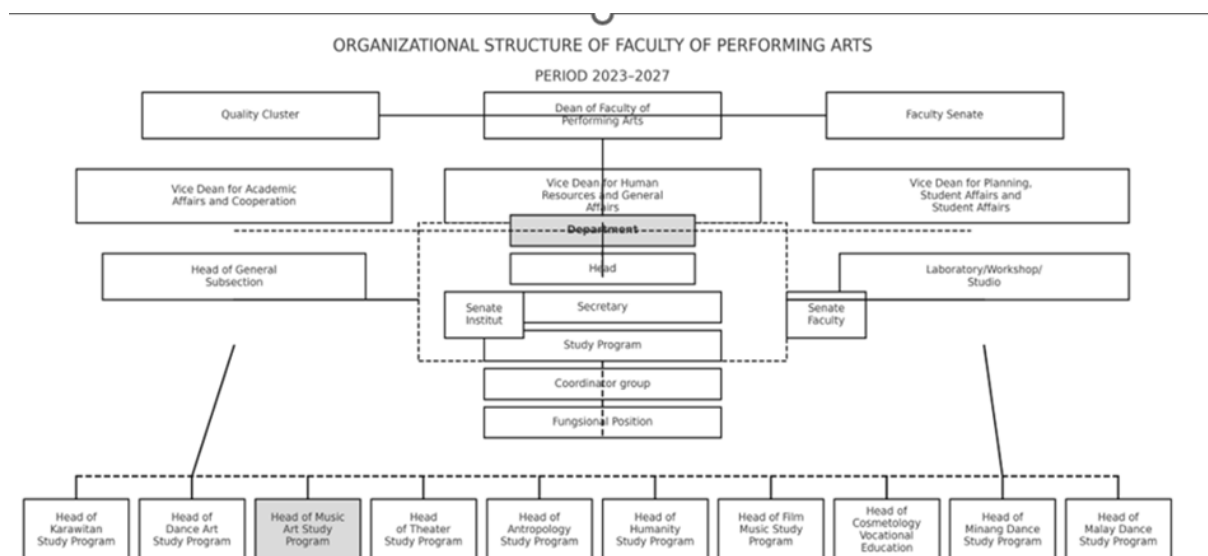


Figure 1. Organisational structure of the Faculty of Performing Arts, with all 10 departments, including Music and Karawitan Arts

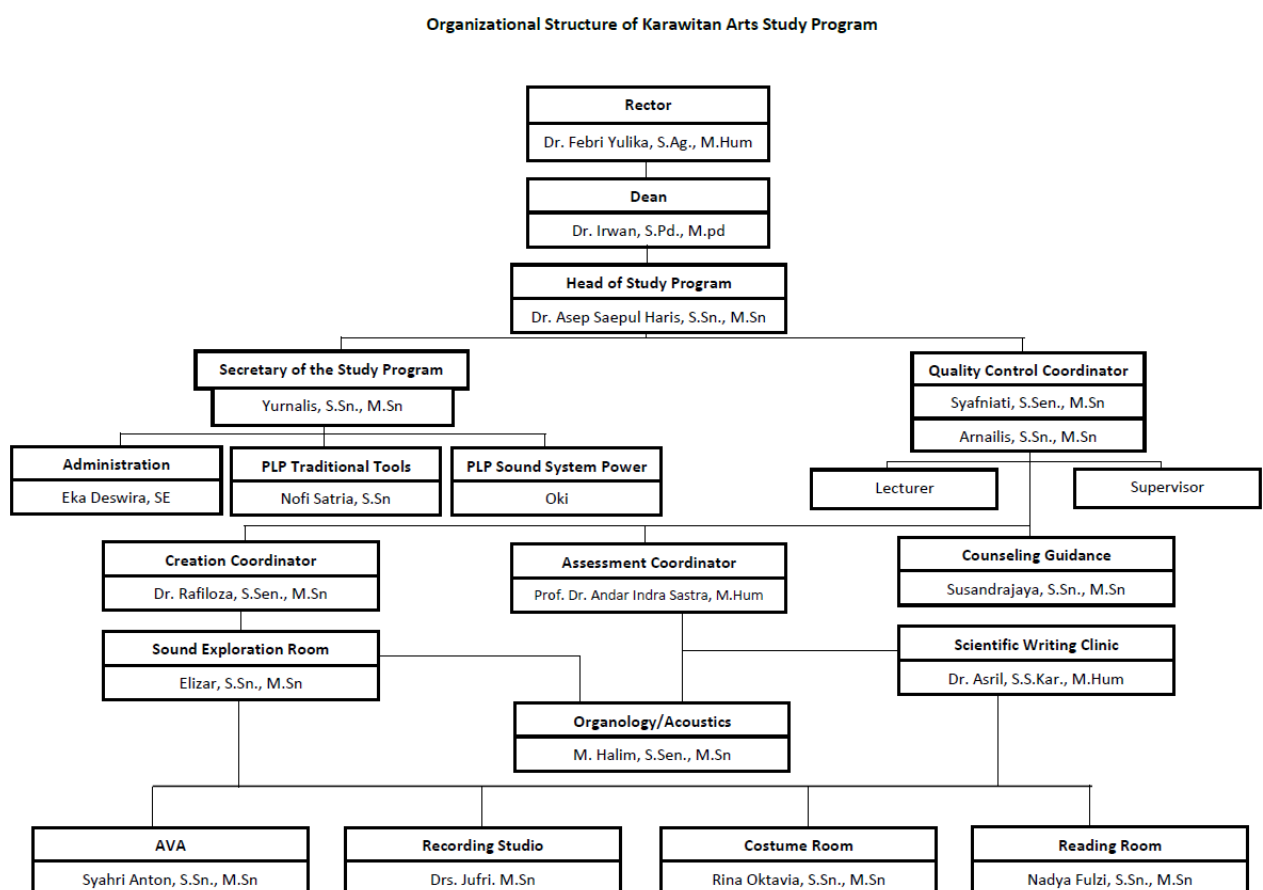


Figure 2. Organisational structure of Karawitan Arts

Further development of the programme, statistical data and evaluation results

Table 1. Statistics of Music study programme

Music programme							
		2019	2020	2021	2022	2023	2024
# Study Places offered by HEI		90	120	90	80	80	80
# Applicants	Σ	56	87	77	77	93	94
	f	16	25	12	41	37	46
	m	40	62	65	36	56	48
Application rate		62.22%	72.50%	85.56%	96.25%	116.25%	117.50%
# First-Year Students (accepted applicants)	Σ	46	74	51	55	65	60
	f	15	22	8	30	24	31
	m	31	52	43	25	41	29
Rate of female students		0.33	0.30	0.16	0.55	0.37	0.52
# Foreign Students	Σ	0	0	0	0	0	0
	f	0	0	0	0	0	0
	m	0	0	0	0	0	0
Rate of foreign students		0	0	0	0	0	0
Percentage of occupied study places		51.11%	61.67%	56.67%	68.75%	81.25%	75.00%
# Graduates	Σ	23	38	0	0	0	0
	f	9	20	0	0	0	0
	m	14	18	0	0	0	0
Success rate (students who finished their studies)		50.00%	51.35%	0.00%	0.00%	0.00%	0.00%
Dropout rate (students who dropped their studies)		23.91%	22.97%	11.76%	10.90%	20.00%	0.00%
Average duration of study		5 Years	4,5 Years	0 Years	0 Years	0 Years	0 Years
Average grade of final degree		3.55	3.55	0	0	0	0

The Music Study Programme expanded its intake capacity in 2020. In 2021, however, capacity was reduced, partly due to the COVID-19 pandemic and the introduction of similar programmes at other universities (such as UIR, UNJA, and UNP). Admissions follow institutional procedures.

Although the programme does not distinguish by gender, more men apply, reflecting cultural perceptions of music as male-dominated. Completion within the standard timeframe is uncommon. Achieving instrumental proficiency requires extensive practice (around 5,000 hours over four years), which is insufficient to reach professional standards. Success rates vary between 55 and 62% due to various factors which include: the heavy workload, limited self-discipline, part-time employment, and the campus's isolated setting.

Table 2. Statistics of Karawitan Arts

Karawitan Arts							
		2019	2020	2021	2022	2023	2024
# Study Places offered by HEI		60	60	60	40	60	60
# Applicants	Σ	42	46	51	29	47	48
	f	10	19	14	15	15	17
	m	32	27	37	14	32	31
Application rate		70.00%	76.67%	85.00%	72.50%	78.33%	80.00%
# First-Year Students (accepted applicants)	Σ	37	38	38	22	40	31
	f	7	14	8	9	10	10
	m	30	24	30	13	30	21
Rate of female students		0.19	0.37	0.21	0.41	0.25	0.32
# Foreign Students	Σ	13	9	0	0	11	4
	f	10	9	0	0	5	3
	m	3	0	0	0	6	1
Rate of foreign students		0.35	0.24	0	0	0.275	0.13
Percentage of occupied study places		61.67%	63.33%	63.33%	55.00%	66.67%	51.67%
# Graduates	Σ	23	21	0	0	0	0
	f	5	11	0	0	0	0
	m	18	10	0	0	0	0
Success rate (students who finished their studies)		62.16%	55.26%	0.00%	0.00%	0.00%	0.00%
Dropout rate (students who dropped their studies)		24.32%	18.42%	13.16%	18.18%	10.00%	0.00%
Average duration of study		5 Years	4,5 Years	-	-	-	-
Average grade of final degree		3.48	3.54	0	0	0	0

The intake capacity of the Karawitan Arts has remained stable, but applicant numbers consistently fall below the quota. This is mainly due to the impact of the COVID-19 pandemic and the very limited number of graduates from vocational schools specialising in karawitan. On average, applicant numbers remain below the quota because few students have an arts background. As most applicants from general and vocational secondary schools are male, this demographic imbalance contributes to the lower number of female students in the Karawitan Arts.

By contrast, most of the foreign students in karawitan are female. The average study duration in 2019–2024 was relatively low, as many students left early to pursue careers in the arts and entertainment industries, believing their partial training sufficient. Tracer studies, however, show that graduates with formal qualifications had better career prospects and more stable employment. The average GPA remained above 3.5, indicating strong academic performance among those who completed the programme. Foreign student enrolment at ISI Padangpanjang for karawitan remained unstable between 2019 and 2024. This was due to the COVID-19, limited government quotas, and the absence of authorisation to run international programmes.

Appraisal

The Music Study Programme consistently records higher first-year enrolments than the Karawitan programme, rising from 46 students in 2019 to a peak of 74 in 2020, before stabilising between 51 and 65 and slightly declining to 60 in 2024. No foreign students were enrolled across the period. The average length of study for graduates was 4.5–5 years, with success rates of around 50% in 2019–2020, but no graduates recorded after 2020 as more recent cohorts are still in progress. Dropout rates ranged between 10% and 23,9%.

The Karawitan Arts shows greater fluctuation and a lower overall intake, with first-year enrolments ranging from 22 to 40 students, the highest in 2023. Unlike Music, Karawitan attracted a noticeable share of foreign students, particularly in 2019–2020 and 2023–2024, most of whom were female. Graduates also completed their studies in about 4.5–5 years, with success rates above 50% in 2019–2020, and none recorded thereafter. Dropout rates were moderate (10–24%), and the average GPA of graduates was consistently above 3.5, showing strong academic achievement among those who completed the programme.

Programme Description and Appraisal in Detail

1. Objectives

1.1 Objectives of the study programme*

Music study programme (hereinafter - **MSP**) and Karawitan Arts study programme (hereinafter - **KSP**) are administered by the Faculty of Performing Arts (FSP). The target group of the MSP and KSP programmes at ISI Padangpanjang (hereinafter - HEI) comprises students with strong musical aptitude and motivation who have completed secondary education (SMA, SMK, or equivalent). The programmes are designed to prepare graduates for relevant professional fields and societal contexts. Candidates may come from a variety of musical backgrounds: Western classical, Indonesian traditional (karawitan, gamelan), or contemporary music, and who wish to further develop their skills in performance, theory, research, and pedagogy.

Music Study Programme (MSP)

This programme (MSP) is distinguished by its unique approach, combining strong performance foundations with the development of Malay music and traditional arts. Its curriculum, adapted from the European NQF/QF-EHEA framework and ISI Yogyakarta, emphasises mastery of musical knowledge, skills, techniques, and repertoire. The curriculum includes subjects such as Archipelago Malay Culture, Performing Arts and Technology, Malay Music, Gamad Music, and Minang Karawitan.

Music study programme has undergone three accreditations:

- in 2007, with a grade of C, and the improvements were made in governance, academic staff performance, student quality, and other areas;
- in 2014, the programme received a grade of B, and
- in 2018 it achieved grade A by BAN-PT.

The current vision of MSP:

- to become a creative, innovative, and globally competitive centre for music education that produces scholars and entrepreneurs rooted in cultural arts by 2044.

MSP offers a Bachelor's degree with a Bachelor of Arts (S.Sn.) graduate qualification, comprising 144 credits or 217 ECTS for a four-year period of study.

In terms of skills, knowledge and techniques, students are trained to achieve technical excellence and artistic versatility in live performance across diverse traditions of Malay music and traditional arts, setting the programme apart from other institutions.

Graduates are prepared to become musicians, researchers, composers, arrangers, conductors, and music technologists with strong critical, artistic, and scholarly abilities at national and international levels. They acquire practical skills in performance, composition, orchestration, sound engineering, and management, equipping them for careers in education, the music industry, and cultural institutions.

This distinctive orientation is also reflected in the stated Educational Objectives (EO), and Learning Outcomes (LO) of MSP are presented in Table 1.1.A and 1.1B.

Table 1.1 (A) Educational Objectives of MSP

EO-1	To produce graduates who are professional as music scientists, musical skills from various genres/styles of music and production management and promotion of works by using knowledge and skill in the field of music;
EO-2	To produce graduates who able to create, presents, and communicate, musical works from various artistic and cultural phenomena innovatively and professionally;
EO-3	To produce graduates who can develop themselves to always learn through advanced studies, research, and music at the local, regional and international scopes;
EO-4	To produce graduates who are ethical and responsible as well as able to demonstrate leadership and to work together in a globalized world.

Table 1.1 (B) Learning Outcomes of MSP

LO-1	Have knowledge and environmental insight, as well as understanding and developing the existence of arts and culture related to the field of music;
LO-2	Able to perform various musical paradigms from various genres/styles of music;
LO-3	Able to apply logically, critically, systematically, innovatively, collaboratively to build networks and self-development, as well as to argue scientifically to solve problems in career, society, nation and world;
LO-4	Able to recognize techniques and methods as well as theoretical concepts from various genres/styles of music such as music skills, music education, and music creation, as well as music technology.
LO-5	Able to plan, design, create, present, and communicate music based on the theory and research findings of the art of music;
LO-6	Able to manage and evaluate the production and promotion of musical works that contain entrepreneurial values innovatively and adaptively, as well as uphold copyright;
LO-7	Have an ethical attitude, professional ethics, scientific responsibility, leadership and adaptability and awareness of living together in cultural diversity;

Karawitan Arts (KSP)

This Programme (KSP) focuses on the study, preservation, and creative development of traditional Malay and archipelagic (Nusantara) music, with particular emphasis on Minangkabau musical traditions. It combines theoretical study with practical training in performance, composition, and analysis, fostering creativity grounded in cultural heritage.

The curriculum is developed collaboratively by lecturers, students, alumni, and external partners to ensure continued relevance and alignment with contemporary needs. The field of study, Archipelagic Music, encompasses two main areas: the analysis and the composition of archipelagic music.

The current vision of KSP:

- to become an excellent and globally competitive Karawitan Arts that produces scholars and entrepreneurs grounded in archipelagic (Nusantara) music by the year 2044.

KSP offers a Bachelor's degree (S.Sn.), comprising 144 credits or 217 ECTS over a four-year period of study.

In terms of skills, knowledge, and techniques, students are trained to achieve artistic mastery and cultural understanding in the performance and composition of traditional Indonesian music.

Graduates are prepared to become performers, composers, researchers, educators, and cultural entrepreneurs with strong creative and analytical abilities. They acquire practical experience in ensemble performance, traditional instrument mastery, composition, and artistic management, enabling them to contribute to education, cultural preservation, and the creative

industries. The aim of KSP is to prepare graduates with the following stated Educational objectives (EO) and Learning Outcomes (LO) presented below.

Table 1.2 (A) Educational Objectives of KSP

Code	Educational Objectives (EO) of Karawitan Arts (KSP)
EO-1	Apply knowledge in the field of ethnic music from the archipelago, which is both global and competitive.
EO-2	Advance career with professional development and lifelong learning.
EO-3	Develop entrepreneur-based archipelagic music performing arts through national and international cooperation.
EO-4	Be responsible for working in the field of Nusantara music expertise and internalising academic values, norms, and ethics.

Table 1.2 B. The Learning Outcomes of KSP

Code	Intended Learning Outcomes (ILO) of Karawitan Arts (KSP)
ILO-1	Students are able to identify, analyse, formulate, and solve problems in the field of archipelagic music.
ILO-2	Students are able to master the musical concepts of traditional music of the archipelago.
ILO-3	Students are able to create artworks derived from traditional music of the archipelago professionally within the context of performing arts.
ILO-4	Students are able to master the field of archipelagic music entrepreneurship, as well as manage and build collaborative networks at the global level.
ILO-5	Apply critical, systematic, and innovative thinking in developing or applying science and technology.
ILO-6	Be responsible, honest, and sensitive to the environment and society.

Appraisal:

The qualification objectives of the Music and Karawitan Arts are explained and convincingly presented in relation to their target groups, targeted professional field and societal context of the discipline. They embrace academic proficiency, comprehensive employability, as well as the development of the individual student's personality. The subject-specific and extra-curricular qualification objectives and skills to be acquired correspond with the aspired level at graduation. They take into account the requirements of the national qualification framework.

	Exceptional	Exceeds quality requirements	Meets quality requirements	Does not meet quality requirements	n.r.
1.1* Objectives of the study programme (Asterisk Criterion)			X		

1.1 International orientation of the study programme design*

Both MSP and KSP regularly contribute to international events such as the Padang Panjang Arts Festival (PAPA), which provides students and staff with direct experience of international collaboration and artistic exchange. Both the Music and Karawitan Arts study programmes can legitimately refer to PAPA (Padang Panjang Arts Festival) and other international collaborative activities as part of their internationalisation evidence.

Music Study Programme (MSP)

MSP demonstrates a clear international orientation, as reflected in its vision, curriculum, institutional mission (IM), educational objectives (EO), and intended learning outcomes (ILO). The programme adopts a curriculum modelled on the European NQF/QF-EHEA framework and aligned with the standards of ISI Yogyakarta, ensuring that its content and methods meet internationally recognised academic and artistic benchmarks.

The curriculum incorporates internationally recognised academic and artistic benchmarks and draws on English-language reference materials and global music theory resources. The curriculum includes core subjects aligned with international standards such as:

- Music Theory, Solfeggio, Harmony, Counterpoint, and Form and Analysis

ensuring that students develop skills relevant in global professional contexts.

Graduates gain competencies applicable to both Western and Malay musical traditions, strengthening their ability to work in diverse cultural settings. MSP alumni are employed nationally and regionally as teachers, performers, arrangers, composers, and ensemble directors, with some having obtained international experience, demonstrating the programme's relevance to global employability.

Karawitan Arts (KSP)

KSP also shows international orientation through its academic staff's international backgrounds and through institutional collaborations involving workshops, exchanges, and cross-cultural performances. These activities expose students to global perspectives in ethnomusicology and traditional performing arts.

The curriculum includes internationally relevant components, such as:

- English, Ethnomusicology, Popular Music, and courses supported by English-language and Arabic-language materials.
- Minangkabau performing arts traditions (such as Randai) have been studied and performed internationally, contributing to students' understanding of how local heritage engages with global audiences.

International student participation through the national Darmasiswa programme⁴ further strengthens the programme's global profile, as classes are offered to learners from abroad. Graduates are prepared for careers in cultural and artistic fields both nationally and internationally.

Appraisal:

The programme design appropriately takes into account the required international aspects, with respect, too, to its graduates' employability.

	Exceptional	Exceeds quality requirements	Meets quality requirements	Does not meet quality requirements	n.r.
1.2* International orientation of the study programme design (Asterisk Criterion)			X		

⁴ initiated by the Ministry of Education and Culture of the Republic of Indonesia

1.2 Positioning of the study programme

Positioning of the study programme on the educational market

Music Study Programme (MSP)

The Music Study Programme (MSP) of HEI holds a distinctive position within Indonesia's higher-education landscape through its integration of European and national frameworks. Its curriculum has been partly adapted from the European Qualifications Framework (QF-EHEA) and ISI Yogyakarta, combining conventional Western music theory and performance training with a strong focus on Malay and Minangkabau traditional arts.

The programme's structured learning system, combining theoretical, practical, and research components, and its learner-centred pedagogy foster independent, creative, and critical thinking. Continuous review of teaching and learning strategies ensures responsiveness to new trends in music education, reinforcing MSP's competitiveness in the regional, national, and international educational markets.

- At the *national* level, core courses such as Archipelago Malay Culture, Performing Arts and Technology, Malay Music, Gamad Music, and Minang Karawitan provide the programme with a distinctive cultural identity that sets it apart from similar music departments across Indonesia.
- At the *regional* educational market, MSP attracts students from Sumatra and neighbouring provinces who wish to study a programme that values both classical and indigenous music traditions. Nationally, it complements leading institutions such as ISI Yogyakarta by offering a curriculum more strongly rooted in archipelagic Malay culture.
- At the *international* level, the programme's adoption of outcomes-based education (OBE), its alignment with KKNi Level 6 and the European Qualifications Framework (QF-EHEA), and its engagement with the Merdeka Belajar - Kampus Merdeka (MBKM) initiative position it within recognised global higher-education standards.

This hybrid approach enables MSP to bridge global academic standards and local cultural heritage, producing graduates who are conversant with both international and Indonesian repertoires.

MSP is positioned as a forward-looking academic pathway that integrates artistic creativity, research, and performance with professional and entrepreneurial skills. Its three graduate profiles - Composer, Researcher, and Presenter (in Table 1.3A) - prepare students to become innovative creators, analytical thinkers, and versatile performers across a wide range of musical genres.

Table 1.3 A Positioning of Music Study Programme on the educational markets

Key General Profiles	Positioning on the educational markets
1. Composer	Prepares students as creative and innovative composers, equipping them with the skills to express musical ideas in both conventional and contemporary forms, including the use of music media technology in the performing arts. Graduates are capable of producing original works that can compete in regional, national, and international markets, particularly within creative industries, recording studios, and performance settings.
2. Researcher	Prepares students as music researchers who are able to analyse and reveal the phenomenon of music in society as a form of cultural identity. Graduates are skilled in educational and ethnomusicological research across various contexts: formal, informal, and non-formal, and are prepared to contribute to academic and cultural research institutions at national and international levels.

3. Presenter	Prepares students as musicians and performers who are able to present music from diverse genres and styles creatively. Graduates can perform in ensembles, bands, orchestras, and other performance settings, showcasing Indonesian and Western repertoires in regional, national, and international stages and cultural festivals.
---------------------	---

The programme combines theoretical depth with practical expertise, providing training in composition, performance, music technology, and production management. Students are encouraged to think critically and work collaboratively, developing both artistic identity and entrepreneurial capability. Graduates are well prepared for careers as composers, arrangers, researchers, educators, and performing artists within the national and international music industries. The curriculum's alignment with global music education frameworks and its emphasis on creative industries make the programme attractive to prospective students with a balance between artistic excellence and employability in a competitive educational market.

Karawitan Arts (KSP)

The Karawitan Arts (KSP) of Institut Seni Indonesia (ISI) Padangpanjang occupies a distinctive niche within the Indonesian higher education landscape as a centre dedicated to the preservation, innovation, and international promotion of archipelagic and Minangkabau Malay music traditions. The programme's positioning is characterised by a strong regional identity combined with an expanding international presence.

Through a balanced combination of theory and practice, KSP enables students to master traditional musical techniques while engaging in contemporary creative processes. The curriculum is enriched by practical learning experiences such as workshops, seminars, collaborative projects, and performances conducted at regional, national, and international levels. These activities enhance both student competence and the visibility of the programme within the educational market.

- At the *regional* level, KSP serves as a hub for the transmission and revitalisation of Minangkabau musical heritage. Its close collaboration with local cultural communities and artists ensures the continuity of archipelagic traditions while providing students with direct exposure to authentic performance practices.
- At the *national* level, the programme has established a strong reputation for excellence in Minangkabau Malay music. Its lecturers, students, and alumni consistently participate in national festivals, competitions, and academic forums, reflecting KSP's competitiveness among Indonesia's leading art universities. This prominence attracts students from across the country who wish to specialise in traditional music studies grounded in cultural authenticity and academic rigour.
- At the *international* level, KSP contributes to the promotion of Indonesian traditional music through academic publications, creative works, and intercultural collaborations. Lecturers, students, and alumni engage in joint projects and performances abroad, producing research outputs, recordings, and creative prototypes that showcase the richness of Indonesian musical heritage to global audiences.

The programme's alignment with the Indonesian National Qualifications Framework (KKNI) and emphasis on entrepreneurship, research, and cross-cultural collaboration reinforce its competitiveness within the global education market. Its graduates are equipped for careers in teaching, research, performance, and creative production, and are increasingly recognised both nationally and internationally for their expertise in traditional Indonesian music.

KSP occupies a distinctive niche in the higher education market, focusing on the preservation, innovation, and international promotion of archipelagic and Minangkabau Malay music traditions. It develops students' competencies through workshops, collaborative projects, seminars, and performances at regional, national, and international levels.

Through its emphasis on both theory and practice, the programme enables students to master traditional musical techniques while engaging with contemporary creative processes. This strong regional identity, combined with increasing international collaboration and publication, positions KSP as a centre of excellence in archipelagic music studies.

Its graduates are equipped to contribute to the cultural and educational sectors, including teaching, research, and creative production, and are increasingly sought after within Indonesia and abroad for their expertise in traditional music and performance.

The strong national and growing international reputation of KSP, particularly in Minangkabau Malay music, has enhanced its visibility and graduate competitiveness, as reflected in the following Table 1.3 B on Tracer Study data.

Table 1.3 B User Response and Follow-up Plan by Study Programme (Tracer Study Data)

No.	Type of Ability	Excellent (%)	Good (%)	Fair (%)	Poor (%)	Follow-up Plan by Study Programme
1	Integrity (Ethics and moral)	72	28	-	-	Enhancing the activities of spiritual laboratories and implementing academic community discipline.
2	Expertise based on field of knowledge (professionalism)	85	15	-	-	Skill development through masterclasses and workshops.
3	English	65	27	8	-	Improving facilities and organising language training.
4	Information Technology Usage	90	10	-	-	Adding hardware and software to support lectures and promote science and technology developments.
5	Communication	80	17	3	-	Improving communication skills through public speaking training.
6	Teamwork	85	15	-	-	Increasing the frequency of Student Management Skills Training (LKMM).
7	Self-development	75	20	5	-	Building cooperation with various parties both at home and abroad.
	Total	552	132	16	-	-

Positioning of the study programme on the job market for graduates (Employability)

Music Study Programme (MSP)

Graduates of MSP possess a strong mastery of archipelagic and global music traditions, equipping them to work across a wide range of professional fields, including education, government, the private sector, cultural institutions, and creative industries.

The programme's emphasis on composition and performance enables graduates to pursue the following careers:

- composers, arrangers, performers, music educators, and cultural practitioners.

The growing demand for creative content in the media and entertainment industry, including:

- TV (television), film, and digital platforms (such as YouTube, etc.)

has expanded career prospects for graduates specializing in (a) composition, (b) arranging, and (c) music production.

The development of multimedia music composition, in particular, represents a promising and expanding field of employment. To ensure graduate employability, the programme regularly conducts "Tracer Studies" and user satisfaction surveys, analyzing feedback to strengthen curriculum relevance and professional readiness.

Key areas of graduate excellence identified by employers include:

- professionalism, teamwork, and IT skills

while English proficiency and communication are continuously improved through targeted training.

The results of these evaluations are archived and used to support the programme's quality assurance and continuous improvement initiatives.

Karawitan Arts (KSP)

Graduates of the Karawitan Arts (KSP) demonstrate strong competencies in archipelagic and Minangkabau Malay music, enabling them to pursue diverse careers in the education sector, government institutions, cultural organisations, and the creative industries.

The programme's emphasis on performance and applied creative practice equips graduates with the artistic, technical, and entrepreneurial skills required for a range of professional roles, including:

- professional artist or performer;
- composer or music creator;
- educator or trainer;
- curator and arts programme manager;
- arts and culture entrepreneur;
- civil servant in the cultural sector.

Many graduates also establish their own art communities, studios, and cultural initiatives, contributing to employment creation, local development, and the preservation of Indonesia's cultural heritage.

KSP prepares graduates who are able to:

- apply knowledge of Indonesian ethnic music with a global perspective and competitive advantage;
- advance their careers through professional development and lifelong learning;
- develop performance arts based on entrepreneurship and national and international collaboration;
- demonstrate professional responsibility, ethics, and respect for cultural values in their work.

The programme's employability strategy is grounded in continuous consultation with stakeholders, alumni, and employers. Regular tracer studies and stakeholder feedback ensure that the curriculum remains responsive to the needs of the cultural and creative industries. Consequently, KSP continuously updates its learning content to maintain professional relevance while upholding artistic integrity and traditional excellence.

In response to technological advancements, the programme has incorporated technology-oriented courses, including the use of digital audio workstations (DAWs) for live and recorded music production. This integration of digital tools with traditional musical expertise enhances graduates' adaptability and competitiveness in both national and international job markets.

Positioning of the study programme within the HEI's overall strategic concept **Music Study Programme (MSP)**

MSP is one of ten departments under the Faculty of Performing Arts at HEI. The programme plays a central role in realising the institution's vision of becoming a superior and globally competent higher education institution that produces scientists and entrepreneurs rooted in cultural arts by 2044. The programme distinguishes itself through its integration of archipelagic and Malay musical traditions with conventional and contemporary music methodologies. This unique combination reflects the broader institutional commitment to preserving and innovating Indonesia's cultural arts heritage within a global framework.

MSP is aligned with ISI Padangpanjang's strategic objectives, the programme's vision is to become an excellent, creative, and innovative department that produces musicians, researchers, and entrepreneurs who are globally competitive yet grounded in cultural values. Its curriculum and educational objectives are designed to ensure that graduates possess strong artistic, academic, and professional competencies relevant to both national and international contexts. The mapping below in Table 1.3.3 can also be observed between the institutional missions (IM) and the education objectives of the music department.

Table 1.3.3 Positioning programmes within the HEI strategic concept

Institutional Missions (IM)	EO-1	EO-2	EO-3	EO-4
IM-1 Organising quality, character-based, and sustainable education, and implementing independent learning to improve graduate quality.	X		X	X
IM-2 Conducting quality, relevant, and competitive research and community service to support the development of science and technology for societal welfare through the transfer of knowledge and dissemination of technological outcomes published nationally and internationally.	X			X
IM-3 Developing national and international cooperation, ensuring good higher education governance based on information technology, and creating centres of excellence for arts, culture, and innovation works.		X	X	
IM-4 Producing graduates with entrepreneurial spirit, professional competence, and strong character among lecturers, academic community, and education personnel based on Pancasila values.		X		

Karawitan Arts (KSP)

KSP operates under the Faculty of Performing Arts (FSP). The programme contributes directly to the institution's strategic objectives through its core activities in teaching, research, and community engagement, all of which are closely aligned with its expertise in archipelagic music. By preserving, developing, and innovating within the traditions of Nusantara and Minangkabau Malay music, the programme supports ISI Padangpanjang's mission to advance cultural knowledge and foster creativity rooted in Indonesia's artistic heritage. Furthermore, it plays an active role in shaping national identity and character, while strengthening the

institution's vision to become a leading and globally competitive higher education institution that produces scientists and entrepreneurs grounded in cultural arts by 2044.

IM and KSP's Educational Objectives (EO)	EO-1	EO-2	EO-3	EO-4
IM-1 Organising quality education, character, sustainability, and implementing independent learning to improve the quality of graduates;	X		X	
IM-2 Organising quality, relevant, and competitive research and community service in accordance with the advancement of science and technology for the benefit of society through the dissemination of knowledge and the diffusion of technological results published nationally and internationally.	X	X		X
IM-3 Implementing, improving, and developing national and international institutions and cooperation, organising good higher education governance based on information technology, and releasing centres of excellence in arts, culture, and innovation.	X	X	X	X
IM-4 Realising graduates with entrepreneurial spirit, optimising the competence of professional lecturers and education personnel, and building the character of the academic community and education personnel based on the values of Pancasila.	X	X		X

Appraisal:

The reasons given for the positioning in the educational market of both study programmes are plausible. The arguments in support of graduate employability on the basis of the stated qualification objectives are convincingly presented. The future fields of employment for graduates are plausibly set forth. The study programmes are convincingly integrated into the HEI's overall strategic concept. The study programmes' qualification goals are in line with the HEI's mission and strategic planning.

	Exceptional	Exceeds quality requirements	Meets quality requirements	Does not meet quality requirements	n.r.
1.3 Positioning of the study programme					
1.3.1 Positioning of the study programme in the educational market			X		
1.3.2 Positioning of the study programme on the job market for graduates („Employability“)			X		
1.3.3 Positioning of the study programme within the HEI's overall strategic concept			X		

2. Admission

2.1 Admission requirements *

Music and Karawitan Arts (MSP, KSP)

The admission process for the undergraduate programmes at the HEI is conducted in accordance with national and institutional regulations, namely:

- National Regulations:
 - Regulation of the Minister of Research, Technology, and Higher Education No. 48 of 2022 concerning New Student Admissions for Diploma and Undergraduate Programmes at State Universities.
 - Regulation No. 126 of 2016 concerning New Student Admissions for Undergraduate Programmes at State Universities (PTN).
- Institutional Regulation:
 - Decree of the Rector of ISI Padangpanjang No. 59/IT7/KPT/2023 on the Determination of New Student Quotas for SNBP, SNBT, and Independent Pathways for the 2023/2024 Academic Year.

The admission of new students at ISI Padangpanjang is conducted in accordance with the following procedures:

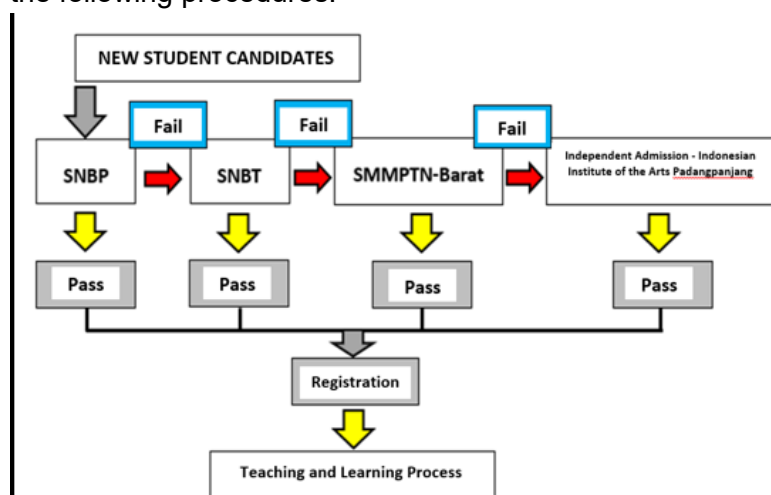


Figure 2. Admission of new students

Based on Figure 2 above, student admission to both study programmes follows the national pattern of four official selection channels:

1. SNBP (Seleksi Nasional Berdasarkan Prestasi) – National Selection Based on Academic Achievement;
2. SNBT (Seleksi Nasional Berdasarkan Tes) – National Selection Based on Written Tests;
3. SMMPTN-Barat – Joint Regional Selection for Western Indonesia; and
4. Independent Selection (Seleksi Mandiri) organised directly by ISI Padangpanjang.

All information, registration procedures, and assessment mechanisms are publicly available on all official portal: <https://isipadangpanjang.siakadcloud.com/spmbfront/jalur-seleksi>

The selection process aligns with the evolution of a model that reflects the advancement of information technology and the digitalization era, as demonstrated by the Computer-Based Written Test (UTBK). The testing and selection model for prospective students is based on the principles of fairness, transparency, flexibility, efficiency, and accountability. Two categories of requirements have been established:

Table 2.1 Requirements for schools and other participants

For Schools	For participants
-SMA/MA/SMK with NPSN -Obtained A accreditation, where the participants were the best achievers (40%) in the school. -Obtained B accreditation, where the participants were the best achievers (30%) in the school. -Obtained C accreditation, where the participants were the best achievers (20%) in the school. -Schools must ensure that participants have not previously joined other similar programs organized by the Ministry of Education or related agencies.	-SMA/MA/SMK students in the final grade (Grade 12) in 2023 who have excellent achievements. -Have academic achievement. -Have NISN and be registered with PDSS. -Have a semester 1–5 report card and grades that have been entered into PDSS. -Be prepared to attend study programmes in the field of science and sports, as specified by the provider.
<i>Note:</i> SMA-Senior High School (general academic track); MA-Islamic Senior High School (similar to SMA, but with an added religious curriculum); SMK: Vocational High School (focuses on technical & vocational training); NISN-National Student Identification Number; NPSN-National School Identification Number; PDSS-School and Student Database	

2.2 Counselling for prospective students

Music and Karawitan Arts (MSP, KSP)

The socialization of the programmes were implemented in secondary schools or equivalent institutions - particularly those with a specialization in music - through the Social Promotion (SosPro) programme in West Sumatra Province and beyond. HEI and its study programmes were introduced through profile screenings and musical performances.

The initiative invited students and teachers to attend music performances and training activities held on campus. It also organised training sessions and coaching for extracurricular music activities in high schools or equivalent institutions, as well as various music competitions and workshops for students and teachers. In addition, the programmes offered scholarships and organized off-campus music performances.

- www.smmptnbarat.ac.id

Promotional efforts included distributing brochures, posters, and leaflets to the wider community; installing banners and billboards; and advertising through print and electronic media. Promotion was also carried out via the ISI Padangpanjang official website:

- <https://isi-padangpanjang.ac.id>

Furthermore, socialisation and promotion of both programmes were strengthened through alumni and current students of the Programmes.

Prospective students could also consult directly with graduates, faculty members, and other stakeholders to learn more about the program's reputation, career prospects, and areas of excellence. Such consultations could be conducted by visiting the program's website:

- <https://www.isi-padangpanjang.ac.id/category/pengumuman/infoakademik/>

or by contacting the programmes via:

- General Email: isi@isi-padangpanjang.ac.id
- ISI Padang Panjang phone: +62 752 82077
- Fax: +62 752 82803

2.3 Selection procedure

The Music Programme for the 2023/2024 Academic Year has designed and determined new student quotas for the SNBP (National Selection Based on Students' Achievement), SNBT (Test-Based National Selection), SMMPTN-Barat, and Independent admission pathways.

The portfolio format can be viewed at the following link:

- <https://edukasi.kompas.com/read/2020/02/14/10214701/isi-dan-format-portfoliojurusan-seni-dan-olahraga-di-snmptn-2020>

1. In the SNBP (National Selection Based on Students' Achievement) prospective students are encouraged to develop a broad range of competencies, adopting a holistic and interdisciplinary approach. This is essential, as success in the future requires mastery of multiple complementary skills and knowledge areas.

The examination materials consist of the following components:

- Scholastic Potential Test (Tes Potensi Skolastik)
- Literacy Test in Indonesian and English
- Mathematical Reasoning

The new student selection procedure can be seen in the table below.

No	New Student Selection Procedure
1	Take the form
2	Return the completed registration form with the registration requirements attached
3	Pay the registration fee
4	All prospective students are required to take the new student admission examination in accordance with the schedule set by the Committee.
5	Prospective students receive the results of the PMB entrance exam.
6	Applicants (prospective students) who do not take the entrance exam/test are automatically declared canceled.
7	Registration can be done via online/website.

2. SNBT (Test-Based National Selection)

The SNBT pathway is based on the results of a Computer-Based Written Test (UTBK) organized nationally. This selection process aims to assess students' academic abilities, reasoning skills, and readiness to pursue higher education in their chosen fields.

The test materials generally cover:

- Scholastic aptitude and reasoning
- Quantitative and analytical skills
- Literacy in Indonesian and English

The process upholds the principles of fairness, transparency, efficiency, and accountability across all participating universities.

3. Independent Admission

The Independent Admission (Jalur Mandiri) pathway is organised directly by HEI (ISI Padangpanjang) as an autonomous selection process. This pathway allows the university to select candidates based on specific academic criteria, portfolios, interviews, or performance tests, particularly relevant to the arts and music fields.

Through this mechanism, ISI Padangpanjang can ensure that students with strong artistic potential and motivation are given the opportunity to join the programme.

2.4 Professional experience – n/r

2.5 Ensuring foreign language proficiency*

The institution has established a policy requiring students to achieve a TOEFL score of 400 or higher as a prerequisite for eligibility to undertake the Final Project Examination. This policy aims to ensure that students possess adequate English proficiency to support academic research, artistic presentation, and participation in international contexts.

Link to Rector's Decree - TOEFL Requirement for Final Project: https://isipp2-my.sharepoint.com/:b:/g/personal/kriya_isipadangpanjang_ac_id/EU56jG2p7A9LjxZ4LSRsbG4BKjyy3aAHvbNwbz2ig-NPMQ?e=kpg33B

While foreign language proficiency is not a requirement for admission, students are provided with opportunities to develop their skills through English language courses offered by the institution. In addition, students are encouraged to pursue further studies in other foreign languages relevant to their artistic and academic pursuits.

Students' English proficiency is also enhanced and demonstrated through extracurricular activities, such as participation in the English Debate Club and other language-based student competitions. These activities foster confidence in communication and critical thinking, aligning with the institution's goal of preparing graduates for both national and international engagement.

2.6 Transparency and documentation of admission procedure and decision*

The assessment system follows the *Guidelines for the Implementation of New Student Admission*.⁵ Admission results are reviewed in a leadership meeting (Chancellor, Vice Chancellors, Dean, Vice Dean I, and Postgraduate Director).

The final decision is issued through a Chancellor's Decree and published on the website.

Applicants can check results online according to their respective pathways (SNMPTN, SNBT, or Independent).

For the SNMPTN route, individual scores are available after the results are announced on the website⁶. For the SNMPTN and SNBT pathways, a written implementation report is submitted to the Ministry of Education and Culture as part of the university's accountability for the admission process of prospective students⁷.

All selection data are archived by the Academic Affairs Office and accessible internally and externally via website⁸.

Appraisal:

The admission requirements are defined and comprehensible. The national requirements are presented and taken into account.

Applicants of both programmes can directly turn to Student Counselling Service Unit, Academic and Student Affairs Bureau, which handles general academic and student support, as well as each faculty or programme's academic advisors and programme heads, for clarification of specific questions, of personal aptitude, of career perspectives. Personal dialogue between applicants and the HEI is provided by defined office hours, by telephone and

⁵ Indonesian Institute of the Arts Padangpanjang: <https://www.isi-padangpanjang.ac.id>

⁶ The same as above: <https://www.isi-padangpanjang.ac.id/>

⁷ <https://www.isi-padangpanjang.ac.id/pengumuman-kelulusan-dan-tata-carapendaftaran-ulang-calon-mahasiswa-baru-jalur-mandiri-isi-padangpanjang/>

⁸ <https://www.isi-padangpanjang.ac.id/keputusan-rektor-tentang-mahasiswa-baruyang-diterima-melalui-jalur-seleksi-nasional-berdasarkan-tes-snbt-institut-seniindonesia-padangpanjang-tahun-akademik-20232024/>

via e-mail. The panel members **recommend** increasing the promotion of the Music and Karawitan Arts study programmes across various regions of Indonesia.

The selection procedure is transparent and ensures that qualified students are admitted. Most students come from lower-income backgrounds, and the admission requirements for English language proficiency appear to be relatively weak. Although English proficiency is assessed through the national entrance test and a separate admission proficiency score is not required, students nevertheless still need a preparation course at the beginning of their study to achieve at least a TOEFL score of 400. Therefore, to support students' academic success and international readiness the panel members **recommend** accreditation under fulfilment of the following **condition**:

Foreign language proficiency is ensured through preparatory English courses offered from the very beginning of the programme, enabling students to achieve a minimum TOEFL score of 400 and acquire the language skills necessary for successful completion of their studies.

The admission procedures are described, documented, and accessible for interested parties. The admission decision is based on transparent criteria and is communicated in writing.

	Exceptional	Exceeds quality requirements	Meets quality requirements	Does not meet quality requirements	n.r.
2.1* Admission requirements (Asterisk Criterion)			X		
2.2 Counselling for prospective students			X		
2.3* Selection procedure (if relevant)			X		
2.4(*) Professional experience (if relevant; Asterisk Criterion for master programmes that require professional experience)					X
2.5* Ensuring foreign language proficiency (Asterisk Criterion)				X condition	
2.6* Transparency and documentation of admission procedure and decision (Asterisk Criterion)			X		

3. Contents, structure and didactical concept of the programme

3.1 Contents

Logic and conceptual coherence*

Music Study Programme (MSP)

MSP curriculum is structured to ensure that all courses are interconnected and complementary, forming a coherent progression from fundamental to advanced competencies (Table 3.1.1A). Each course (column 3) supports the achievement of the Intended Learning Outcomes (ILOs) (column 1) of the Music Study Programme (MSP), and students' abilities are assessed through the Performance Indicators (column 2).

Table 3.1.1 A Music Study Programme (MSP) Curriculum and Learning Outcomes

ILO: Intended Learning Outcomes	PI: Performance Indicators	Courses MSP
1	2	3
ILO-1 Possess knowledge and insight into the environment, and be able to understand and contribute to the development of arts and culture related to the field of music.	Increased knowledge of related arts and culture in the field of music;	Scientific Writing; Research Methodology; Form Science and Basic Musical Analysis; Advanced Musical Form Science and Analysis; Civic Education; Indonesian language; Aesthetics; Ethnomusicology; Musicology;
	Scientifically committed to increasing the potential of environmental insight in the field of music;	Indonesian Language; Religion; Aesthetics; Ethnomusicology; Music Critics; Anthropology;
	The growing presence of arts and culture related to music;	Religion; Civic Education; Pancasila; Indonesian Language; Basic Natural Science; Archipelago Malay Culture; Philosophy of Sciences; Music Psychology; Performing Arts and Technology;
ILO-2 Demonstrate mastery of musical paradigms representing a range of genres and styles of music.	Contribute to various musical paradigms from various genres/styles of music;	Civic Education; Performing Arts and Technology; Educational Music; Music Technology; Band; Malay Music; Gamad Music; Musical Ensemble; (Beginner's, Intermediate, Applied, Standalone, Performance) Instrument; Music Improvisation; Choir; Professional Work; Music Composition;
	Achieving various musical paradigms from various genres/styles of music;	Basic Natural Science; Entrepreneurship; Archipelago Malay Culture; Music Learning Media; Philosophy of Sciences; Music Improvisation; Primavista Vokalia (Italian); Community Service Programme (KKN), Music Marketing;
	The development of independent and competent music arts that give birth to professional musicians.	Basic Music History; Advanced Music History; (Beginner's, Intermediate, Applied, Standalone, Performance) Instrument; Recital Tutoring; Band; Musical Ensemble; Professional Work; Malay Music; Gamad Music; Music;
ILO-3 Able to apply logical, critical, systematic, and innovative	The implementation of presenting a musical idea directly and thinking logically, as well as systematically and	Primavista Vokalia; (Beginner's, Intermediate, Applied, Standalone, Performance) Instrument; Recital Tutoring; Band; Musical Ensemble; Professional Work; Malay Music; Gamad Music; Music Improvisation; Choir; Keyboard; Orchestra;

thinking, and to build networks independently, in order to reason scientifically and solve problems in professional, societal, national, and global contexts.	innovatively in front of an audience;	
	Implementation of collaborative skills in building networks to solve problems in music, community, nation and globally;	Religion; Civic Education; Choir; Pancasila; Indonesian language; English; Entrepreneurship; Educational Music; Music Technology; Band; Musical Ensemble; Malay Music; Arrangement; Music Gamad; Digital Music Production; Music Marketing; Tourism and Arts; Minang Karawitan; Group Vocals; Performance Management; Music Composition; Orchestra; Sound Exploration; Capital Counters; Community Service Programme (KKN); Professional Work;
	Proactive and self-actualizing actions for smooth and sustainable music development;	Piano; Choir; Entrepreneurship; Music Learning Media; Educational Music; Music Technology; Manual Harmony; (Beginner's, Intermediate, Applied, Standalone, Performance) Instrument; Band; Creation Methodology; Musical Ensemble; Malay Music; Create a Vocal Work; Arrangement; Music Gamad; Statistics; Digital Music Production; Music Marketing; Music Improvisation; Group Vocals; Keyboard; Performance Management; Music Composition; Conducting Science; Orchestra; Primavista Vokalia; Audio Recording; Sound Exploration; Sound Engineering; Professional Work;
ILO-4 Able to comprehend the techniques, methods, and theoretical concepts underpinning various music genres and styles.	Increased understanding of techniques and methods as well as theoretical concepts of various music genres/styles;	Basic Music History; Advanced Music History; Basic Solfeggio; Basic Music Theory; Advanced Music Theory; Music Dictation; Basic Harmony Science; Music Learning Media; Intermediate Harmony Science; Counterpoint Tonal; Educational Music; Music Technology; Manual Harmony; Scientific Writing; Research Methodology; Advanced Harmony Science; Form Science and Basic Musical Analysis; Orchestration; Creation Methodology; Create a Vocal Work; Advanced Musical Form Science and Analysis; Arrangement; Reading the Scores; Music Composition; Conducting Science; Orchestra; Capital Counters;
	The creation of various forms of musical works both in the form of educational music, contemporary music, and technological music that can be accounted for ethically, academically, and aesthetically;	Vocal Work; Advanced Musical Form Science and Analysis; Arrangement; Reading the Scores; Music Composition; Conducting Science; Orchestra; Capital Counters; Counterpoint Tonal; Educational Music; Music Technology; Orchestration; Create a Vocal Work; Arrangement; Digital Music Production; Music Improvisation; Music Composition; Computer Music Apps; Audio Recording; Sound Exploration; Sound Engineering; Capital Counters; Professional Work; Final Project;
	Increased creativity and activity in music and cultural arts and being able to interpret its realization in Performing Arts title activities;	Basic Solfeggio; Basic Music Theory; Advanced Music Theory; Piano; Choir; Entrepreneurship; Archipelago Malay Culture; Music Dictation; Basic Harmony Science; Performing Arts and Technology; Music Learning Media; Intermediate Harmony Science; Counterpoint Tonal; Educational Music; Music Technology; Manual Harmony; (Beginner's, Intermediate, Applied, Standalone, Performance) Instrument; Band; Advanced Harmony Science; Form Science and

		Basic Musical Analysis; Orchestration; Creation Methodology; Musical Ensemble; Malay Music; Musicology; Create a Vocal Work; Advanced Musical Form Science and Analysis; Arrangement; Music Gamad; Digital Music Production; Music Marketing; Anthropology; Ethnomusicology; Minang Karawitan; Keyboard; Performance Management; Aesthetics; Music Composition; Conducting Science; Orchestra; Computer Music Apps; Primavista Vokalia; Artistic Arrangement; Audio Recording; Sound Exploration; Sound Engineering; Capital Counters; Professional Work; THESIS;
ILO-5 Able to plan, design, create, present, and communicate musical works grounded in the theories and research findings of the art of music.	Various art and cultural phenomena that are realized in the form of compositions for education and modern technological compositions;	Psychology; Philosophy of Sciences; Scientific Writing; Research Methodology; Creation Methodology; Musicology; Create a Vocal Work; Form Science and Basic Musical Analysis; Advanced Musical Form Science and Analysis; Tourism and Arts; Anthropology; Ethnomusicology; Minang Karawitan; Aesthetics; Music Composition; Conducting Science; Artistic Arrangement; Audio Recording; Music Critics;
	The fulfilment of the design of music activities in various forms of presentation formation in accordance with the theory and findings of music research;	Educational Music; Music Technology; Scientific Writing; Research Methodology; Orchestration; Creation Methodology; Create a Vocal Work; Arrangement; Digital Music Production; Music Composition; Computer Music Apps; Artistic Arrangement; Audio Recording; Sound Exploration; Professional Work; Final Project;
	Create and present music based on music theory and research findings;	Educational Music; Music Technology; Scientific Writing; Research Methodology; Music Composition; Computer Music Apps; Artistic Arrangement; Audio Recording; Sound Exploration; Final Project;
ILO-6 Able to manage and evaluate the production and promotion of musical works that integrate entrepreneurial values, demonstrating innovation, adaptability, and adherence to copyright principles.	Identified problems in managing the production and promotion of musical works that contain entrepreneurial values in an innovative and adaptive manner;	Indonesian language; English; Entrepreneurship; Intellectual Property Rights; Music Marketing; Tourism and Arts; Performance Management; Music Critics;
	The fulfilment of entrepreneurial values in creating quality music so that it can be classified accompanied by professional ethics that are owned as copyright;	Civic Education; Entrepreneurship; Intellectual Property Rights; Music Marketing; Tourism and Arts; Performance Management; Music Critics;
	The establishment of infrastructure in the fulfilment of ethical work and protection of music copyrights;	Intellectual Property Rights; Civic Education; Entrepreneurship; Music Marketing; Tourism and Arts; Music Critics; Digital Music Production;
ILO-7 Demonstrate ethical conduct, professional	Facilitation of operational means in professional ethics & scientific responsibility (in the field of music);	Religion; Civic Education, Basic Natural Science; Pancasila; Indonesian language; Orchestra; Conducting Science; Sociology

integrity, scientific responsibility, leadership, adaptability to change, an awareness of coexistence in cultural diversity	The formation of leadership in responding to change and awareness of living together in cultural diversity;	
	Adopting an ethical attitude towards change and cultural diversity	

Learning strategies are implemented through a learner-oriented approach, promoting both hard and soft skill development. The system includes continuous monitoring, evaluation, and improvement, using valid and reliable assessment instruments to ensure transparency and accountability. The learning process integrates lectures, practicum, performances, internships, workshops, and seminars, encouraging students to think critically, create, and experiment using diverse learning resources. Through this structure, theoretical knowledge, artistic practice, and professional skills are systematically linked to ensure that graduates are academically competent, ethically grounded, and artistically innovative.

The Music Study Programme (MSP) curriculum is presented through the course structure (Table 3.1.1B), where:

- 1 ECTS equals 30 hours, and
- 1 credit equals 170 minutes (approximately 2.83 hours, consisting of 50 minutes of class time and 120 minutes of self-study per class)
- The total workload of the MSP amounts to 144 credits or 217 ECTS.

To enhance its social and scientific relevance, the curriculum (Table 3.1.1B) is regularly reviewed and updated in collaboration with stakeholders to ensure alignment with current developments in science, technology, and the arts. It serves as the core reference for defining and assuring graduates' competencies at the programme level.

Table 3.1.1B Curriculum and Course Structure of the Music Study Programme (MSP)

SMT.	Code	Course Module	Hours in Class	Hours Self-Study	Credit	ECTS	SMT.	Code	Course Module	Hours in Class	Hours Self-Study	Credit	ECTS
First	6030201MKN01	Religion	90.60	32	2	3.02	Second	6030201MKN02	Pancasila	135.90	48	3	4.53
	6030201MKO03	Nationality	90.60	32	2	3.02		6030201MKN02	Indonesian language	90.60	32	2	3.02
	6030201MKO07	Basic Natural Science	90.60	32	2	3.02		6030201MKO05	English	90.60	32	2	3.02
	6030201MKK13	Music History	135.90	48	3	4.53		6030201MKO06	Entrepreneurship	90.60	32	2	3.02
	6030201MKK20	Basic Solfeggio	90.60	32	2	3.02		6030201MKK09	Archipelago Malay Culture	90.60	32	2	3.02
	6030201MKK23	Basic Music Theory	90.60	32	2	3.02		6030201MKK21	Music Dictation	90.60	32	2	3.02
	6030201MKK39	Piano	90.60	32	2	3.02		6030201MKK24	Advanced Music Theory	90.60	32	2	3.02
	6030201MKK48	Choir	135.90	48	3	4.53		6030201MKK27	Basic Harmony Science	90.60	32	2	3.02
Sub Total					19	27.18	Sub Total					19	28.69
Third	6030201MKF11	Performing Arts and Technology	90.60	32	2	3.02	Fourth	6030201MKF10	Philosophy of Sciences	90.60	32	2	3.02
	6030201MKK15	Intellectual Property Rights	90.60	32	2	3.02		6030201MKF12	Scientific Writing	135.90	48	3	4.53
	6030201MKK19	Music Psychology	90.60	32	2	3.02		6030201MKK18	Research Methodology	135.90	48	3	4.53
	6030201MKK25	Music Learning Media	90.60	32	2	3.02		6030201MKK29	Advanced Harmony Science	90.60	32	2	3.02
	6030201MKK28	Intermediate Harmony Science	90.60	32	2	3.02		6030201MKK31	Form Science and Basic Musical Analysis	90.60	32	2	3.02
	6030201MKK30	Counterpoint Tonal	90.60	32	2	3.02		6030201MKK34	Orchestration	90.60	32	2	3.02
	6030201MKK33	Music Education	90.60	32	2	3.02		6030201MKK36	Creation Methodology	135.90	48	3	4.53
	6030201MKK38	Music Technology	135.90	48	3	4.53		6030201MKK44	Applied Instrument	90.60	32	2	3.02
	6030201MKK40	Manual Harmony	90.60	32	2	3.02		6030201MKK49	Musical Ensemble	135.90	48	3	4.53
	6030201MKK43	Intermediate Instrument	90.60	32	2	3.02		6030201MKK50	Malay Music	90.60	32	2	3.02
	6030201MKK47	Band	90.60	32	2	3.02	Sub Total					24	36.24
Fifth	6030201MKK16	Musicology	90.60	32	2	3.02	Sixth	6030201MKK17	Performance Management	90.60	32	2	3.02
	6030201MKK26	Create a Vocal Work	90.60	32	2	3.02		6030201MKK22	Aesthetics	90.60	32	2	3.02
	6030201MKK32	Advanced Musical Form Science and Analysis	90.60	32	2	3.02		6030201MKK37	Music Composition	135.90	48	3	4.53
	6030201MKK35	Arrangement	90.60	32	2	3.02		6030201MKK46	Performance Instrument	90.60	32	2	3.02
	6030201MKK41	Reading the Scores	90.60	32	2	3.02		6030201MKK52	Conducting Science	90.60	32	2	3.02

Seventh	6030201MKK45	Standalone Instrument	90.60	32	2	3.02	Eighth	6030201MKK53	Orchestra	90.60	32	3	4.53	
	6030201MKK51	Gamad Music	90.60	32	2	3.02								
		Sub Total			14	21,14				Sub Total			1	21,14
													4	
	Elective 1a	Statistics	90.60	32	2	3.02		Elective 6a	Music Critics	90.60	32	2	3.02	
	Elective 1b	Digital Music Production	90.60	32	2	3.02		Elective 6b	Capital Counters	90.60	32	2	3.02	
	Elective 2a	Music Marketing	90.60	32	2	3.02		Elective 7a	Artistic Arrangement	90.60	32	2	3.02	
	Elective 2b	Tourism and Arts	90.60	32	2	3.02		Elective 7b	Recital Tutoring	90.60	32	2	3.02	
	Elective 3a	Anthropology	90.60	32	2	3.02		Elective 8a	Sociology	90.60	32	2	3.02	
	Elective 3b	Ethnomusicology	90.60	32	2	3.02		Elective 8b	Primavista Vokalia	90.60	32	2	3.02	
	Elective 4a	Minang Karawitan	90.60	32	2	3.02		Elective 9a	Audio Recording	90.60	32	2	3.02	
	Elective 4b	Music Improvisation	90.60	32	2	3.02		Elective 9b	Computer Music Apps	90.60	32	2	3.02	
	Elective 5a	Group Vocals	90.60	32	2	3.02		Elective 10a	Sound Exploration	90.60	32	2	3.02	
	Elective 5b	Keyboard	90.60	32	2	3.02		Elective 10b	Sound Engineering	90.60	32	2	3.02	
	Sub Total Pilihan			10	15,1		Sub Total Pilihan				10	15,1		
Seventh	6030201MKK08	KKN (Community Service Course)	135.90	48	3	4.53	Eighth	6030201MKK55	FINAL PROJECT	271.80	96	6	9.06	
	6030201MKK54	Professional Work	135.90	48	3	4.53			Sub Total			6	9.06	
		Sub Total			6	9.06								
Total credit: 144 Credits and Total ECTS 217,44 ECTS														

A major challenge is that most entrants come from general secondary schools without prior musical training, as specialist music schools are scarce in the region. To address this challenge, the curriculum is designed to bridge knowledge gaps through additional practice hours, mentoring, and orientation in instrument selection. Students choose a major instrument after introductory sessions, supported by lecturer assessments and recommendations.

Karawitan Arts (KSP)

The KSP curriculum is structured based on Rector Regulation No. 566/IT7/KPT/2022, which stipulates that a bachelor's degree programme is offered and can be completed within four years or eight semesters. The total of 144 credits comprises:

- 9 credits of national courses,
- 9 credits of university courses,
- 9 credits of faculty courses,
- 97 credits of core courses in the Karawitan Arts, and
- 20 credits of elective courses.

The core courses of KSP:	The practice-based, creative, or composition-oriented subjects of KSP:
<ol style="list-style-type: none"> 1. Research Methodology 2. Nusantara Musicology 3. Art Criticism 4. Nusantara Malay Culture 5. Ethnomusicology 6. Music Form and Analysis 7. Performing Arts and Technology 8. Aesthetics 9. Music Transcription 10. Academic Writing 	<ol style="list-style-type: none"> 1. Creative Methodology 2. Music Form and Analysis 3. Nusantara Music Composition 4. Illustrative Music Composition 5. Music Industry Composition 6. Performing Arts Management 7. Music Marketing Technology 8. Harmony 9. Popular Music 10. Entrepreneurship

This curriculum is presented through the course structure (Table 3.1.1C), where

- 1 ECTS equals 30 hours, and
- 1 credit equals 170 minutes (approximately 2.83 hours, comprising 50 minutes of class time and 120 minutes of self-study per class).
- The total workload of the KSP amounts to 144 credits or 217 ECTS.

The curriculum reflected in the course content is designed to equip students with the ability to understand, analyse, and solve problems related to the field of Nusantara (Indonesian

archipelago) music. The Table 3.1.1C below presents each course (column 3) which supports the achievement of the Intended Learning Outcomes (ILOs) (column 1) of the Music Study Programme (MSP), and students' abilities are assessed through the Performance Indicators (column 2).

Table 3.1.1 C Karawitan Arts (KSP) Curriculum and Learning Outcomes

ILO: Intended Learning Outcomes	PI: Performance Indicators	Courses of KSP
1	2	3
ILO-1 Students are able to identify, analyse, formulate, and solve problems in the field of Indonesian traditional music.	1. Students are able to identify Nusantara ethnic music	Ethnomusicology, Archipelago Musicology, Archipelago Malay Culture
	2. Students are able to analyse the concept of Nusantara ethnic music	Fundamentals of Music Theory, Music Transcription, Solfeggio, Dictation, Harmony
	3. Students are able to formulate and solve problems in the field of research and works of Nusantara ethnic music	Research Methods, Creation Methodology
ILO-2 Students are able to master the musical concepts of Indonesian traditional music	1. Students are able to play Nusantara ethnic music (Minangkabau traditional music style)	Minangkabau dendang, Saluang & Sampelong; Minangkabau Dance, Talempong Dance Music; Gandang Tambua, Manik, Sarunai; Dulang Islamic Music, Rabab Pasisia; Bansi; Minang Randai; Islamic Music, Indang Pariaman, Gandang Tambua
	2. Students are able to play Sumatran music	Deli Malay Music, Riau Malay Music
	3. Students are able to play outside Sumatran music	Balinese Gamelan, Javanese Gamelan, Sundanese Gamelan
ILO-3 Students are able to create professional artworks derived from traditional Indonesian music of the archipelago professionally within the context of performing arts.	1. Students are able to identify and arrange new forms of works originating from Nusantara ethnic music	The Forms of Music Analysis, Ethnomusicology, Archipelago Musicology
	2. Students are able to create works of art that originate from Nusantara ethnic music	Archipelago Musical Composition, Industrial Music Composition, Illustration Music Composition
	3. Students are able to demonstrate new works in the form of performances	Show Management, Performing Techniques
ILO-4 Students are able to demonstrate expertise in music entrepreneurship and the ability to manage and build global networks in the field of Indonesian traditional music	1. Students are able to build a network of cooperation with stakeholders	Entrepreneurship, Performing Arts Management, Tourism & Creative Economy
	2. Students are able to communicate the power of archipelago music art products	Indonesian Language, Public Communication Studies
	3. Students are able to publish and promote art products at national and international levels	English, Music Marketing Technology, Performing Arts and Technology

ILO-5 Apply critical, systematic, and innovative thinking in developing or applying science and technology.	1. Students are able to formulate the form of the development of Nusantara ethnic music knowledge	Scientific Writing, Semiotics, Philosophy of Science, Aesthetics, Popular Music
	2. Students are able to find new innovations in the application of Nusantara ethnic music knowledge	Art Criticism, Acoustic Organology
	3. Students are able to carry out the application of scientific and technological findings to society	Community Service Programme (KKN), Basic Natural Sciences, Entrepreneurship, Performing Arts Management
ILO-6 Be responsible, honest, and sensitive to the environment and society.	1. Students are able to appreciate the diversity of cultural values in the environment and society	Religion, Pancasila
	2. Students are able to formulate values, ethics and morals that live in society	Religion, Pancasila
	3. Students are able to integrate the value system that applies in society	Citizenship, Pancasila

Rationale for degree and programme name*

The official naming of study programmes in Indonesia - both in Indonesian and in English - is regulated by Decision of the Director-General of Higher Education, Science, and Technology Number 96/B/KPT/2025 dated 9 September 2025 on the Names of Study Programmes in Academic and Professional Education⁹. on the Names of Study Programmes in Academic and Professional Education.

For Music Study Programme: Musik or Music (in English)

For Karawitan Study Programme: Seni Karawitan or Karawitan Arts (in English)

Music Study Programme (MSP)

MSP aims to equip graduates with comprehensive competencies aligned with its three academic profiles:

- composition,
- research, and
- performance

These profiles serve as the foundation for students' specialisation pathways towards graduation - namely as:

- Composers (conventional or multimedia),
- Researchers/Scholars (in arts and culture or music education), and
- Performers/Musicians.

The curriculum reflects a balanced integration of theoretical and practical components. The theoretical domain includes courses such as:

- Performing Arts and Technology, Music History, Musicology, Research Methodology, Creation Methodology, and Aesthetics.

The practical domain covers instrumental and vocal performance, solfeggio, harmony, counterpoint, orchestration, composition, arrangement, and music technology.

In addition to musical skills, students are equipped with managerial and technological competencies, particularly through modules such as Performance Management and Music Technology, enabling them to apply digital and multimedia tools in contemporary professional

⁹ Keputusan Direktur Jenderal Pendidikan Tinggi, Sains, dan Teknologi Nomor 96/B/KPT/2025 dated 9 September 2025

contexts. During the seventh semester, students undertake Professional Work - a capstone course allowing them to apply knowledge and skills in one of the three specialisation areas: Composition, Research, or Music Performance. This structure ensures that each student's academic trajectory is aligned with their professional interest and the programme's intended learning outcomes.

The Music Study Programme confers the Bachelor of Arts (S.Sn.) degree, in accordance with national higher education regulations. The degree title and programme name directly correspond to the curriculum's structure and objectives - integrating artistic creation, research, and performance within a unified academic framework of music studies.

Karawitan Arts (KSP)

KSP is structured into two principal fields of study:

- academic research and writing (Final Project) and
- artistic creation (musical composition).

Both specialisations place emphasis on research and the creative development of Nusantara (Indonesian archipelagic) music, with the primary object of study being the scholarly and artistic exploration of traditional musical forms.

The academic research pathway focuses on Nusantara music scholarship, encompassing subjects such as:

- Nusantara Musicology, Aesthetics, Music Form Analysis, Art Criticism, and Research Methods.

In parallel, the artistic creation pathway develops students' creative and practical competencies through courses such as:

- Creation Methods, Nusantara Music Composition, Performing Arts Management, and Popular Music Composition.

Through this dual emphasis on scholarship and creativity, the programme aims to produce graduates who are able to research, preserve, innovate, and reinterpret Nusantara musical traditions within academic and artistic contexts.

Graduates of the Karawitan Arts are awarded the Bachelor of Arts (S.Sn.) degree, conferred by HEI in accordance with national higher education standards.

Integration of theory and practice*

Music Study Programme (MSP)

Each programme prepares the analysis (Tables – below) of how theory is connected to practice. The integration of theory and practice is demonstrated in courses such as:

- Orchestration (in the fourth semester), where the learning process builds upon several theoretical foundations, including:
- Music Theory, Music Dictation, Solfeggio, Harmony, and Music Form and Analysis.

A fragment of examples illustrating the integration of theory and practice in the Music Study Programme (MSP) is presented in Table 3.1.3A

Table 3.1.3A Example of Theory and Practice Integration for MSP

Practical Courses	Religion	Pancasila	Civic Education	Basic Music Theory & Analysis	Music Learning Media	Gamad Music	Entrepreneurship	Scientific Writing
Music Education	V	V	V					V

Music Dictation				V				
Performance Management							V	
Basic Solfeggio				V				

Karawitan Arts (KSP)

The lecturers of KSP are graduates who specialise in the study and creation of Nusantara music. Their expertise is demonstrated through extensive experience in research and artistic performance at both national and international levels.

The Karawitan Arts Study Programme integrates both theoretical and practical courses, fostering a comprehensive understanding of the development of Nusantara music through theoretical study while reinforcing it through performance-based practice. This integrated approach aims to produce graduates who demonstrate mastery in the field of Nusantara music, grounded in both conceptual knowledge and artistic skill.

A fragment of examples illustrating the integration of theory (Theoretical courses) and practice (Practical courses) in the Karawitan Arts (KSP) is presented in Table 3.1.3B.

Table 3.1.3B Example of Theory and Practice Integration for KSP

Theoretical Courses	Practical Courses
Nusantara Malay Culture	Talempong Pacik/Tingkah
Basic Theory of West Music	Gandang Tambua
Nusantara Musicology	Dendang Minangkabau
Music Dictation and Solfeggio	Saluang & Sampelong Instrument
Performing Art Management	Dance Music of Talempong
Music Transcription	Randai
Creation Methodology	Gandang Sarunai
Art Critics	Nusantara Music Composition

Interdisciplinary thinking

Music Study Programme (MSP)

The Bachelor of Music programme offers a comprehensive curriculum comprising both mandatory and elective courses that extend beyond the primary field of study.

Mandatory courses are categorised into

- National,
- Institutional, and
- Faculty Courses.

Each of this category integrates interdisciplinary knowledge essential for strengthening the field of music. For example:

- the Religion course explores norms and etiquette in musical performance, both individual and ensemble. Similarly, Citizenship addresses aspects of human behaviour relevant to musical collaboration and cultural understanding.

In addition, there are Elective courses which encompass diverse fields such as:

- Statistics, Tourism and the Arts, Anthropology, Sociology, and Minang Karawitan,

which support the competencies required for the Final Project. For instance, students focusing on composition must draw on ethnic musical elements to develop new works, making courses like Minang Karawitan and Sociology invaluable references.

Interdisciplinary education thus plays a crucial role in preparing students for professional practice, as reflected in the close interconnection among these courses:

Interdisciplinary Courses			
	with		with
Performance Management	Artistic Arrangement	Music Composition	Performing Arts and Technology
	Sound Engineering		Archipelago Malay Culture
	Tourism and Arts		Research Methodology
	Music Marketing		Computer Music Apps
	Music Technology		Sound Exploration
	Arrangement		Sociology
	Digital Music Production		Ethnomusicology
			Scientific Writing
			Minang Karawitan

Karawitan Arts (KSP)

Interdisciplinary Courses			
Performance Management	Tata Teknik Pentas	Music Composition	Industrial Music Composition
	Field Study and Community Service		Music Illustration Composition
	Performing Arts Management		Composition of Indonesian Music
	Music Marketing Technology		Computer Application
	Public Communication		Performing Arts and Technology
	Entrepreneurship		Popular Music
	Stage Techniques		

Ethical aspects

Music Study Programme (MSP)

Based on the learning outcomes of MSP, particularly **ILO-7**, which highlights ethical behaviour, professional integrity, scholarly responsibility, leadership, adaptability, and cultural awareness, students are guided to develop ethical conduct in both thought and action throughout their studies. Students are expected to uphold Pancasila values, respect institutional norms and traditions, and comply with academic regulations. These principles promote effective communication, harmonious coexistence in cultural diversity, and the ability to express rational and objective opinions. Students must also demonstrate honesty, discipline, courtesy, and adherence to institutional policies.

Ethical standards are regulated by the Minister of Education, Culture, Research, and Technology Regulation No. 51 of 2022 concerning the Statute of HEI, Chapter III, Implementation of the Tridharma of Higher Education, Section Four: Code of Ethics.

These regulations apply to all study programmes within the institution.

Karawitan Arts (KSP)

In line with the objectives of KSP (EO-4), all courses integrate academic values, norms, and ethics. The mandatory course “Philosophy of Minangkabau Traditional Values” (Falsafah Adat Minangkabau) specifically addresses ethical principles within the Minangkabau cultural context rooted in local wisdom and cultural traditions. Courses such as:

- Research Methods, Creative Methods, Music Composition, Article Writing Techniques, train students to maintain academic integrity when conducting research on Nusantara music, ensuring originality and preventing plagiarism in scholarly work.

The ethical standards apply equally to lecturers and academic staff, ensuring that all teaching, research, and artistic activities are carried out in accordance with the institution's Code of Ethics and professional standards with particular emphasis on the prevention of plagiarism in written works, proposals, and projects.

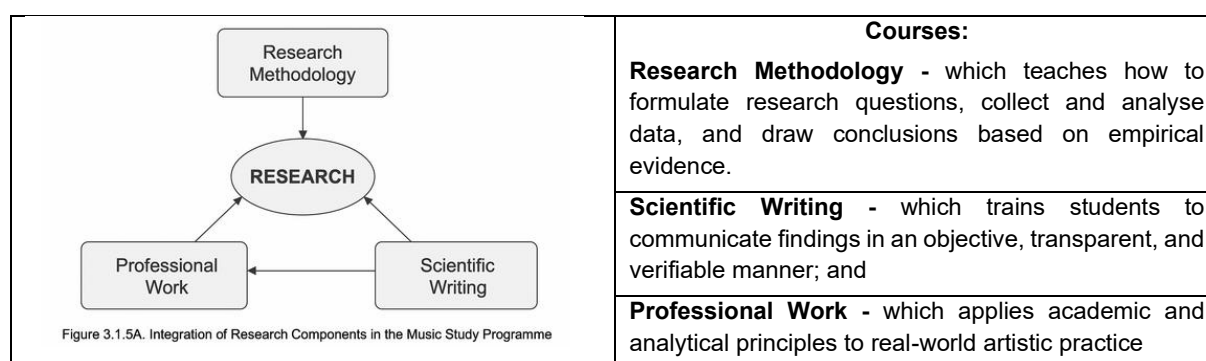
Methods and scientific practice*

Music Study Programme (MSP)

MSP applies scientific methods through a structured and progressive learning process that develops from foundational knowledge to independent research and professional application. In the early years, students acquire systematic knowledge and technical skills as the basis for further analytical and creative exploration. In the later stages, - in the third and fourth years, they are trained to apply the following methods to complex theoretical and musical issues:

Scientific methods	Description
Critical reasoning	Involves logical evaluation of ideas, arguments, and evidence - consistent with scientific principles of rationality and objectivity.
Problem-solving	Applies structured, step-by-step processes to analyse and resolve complex issues - reflecting the systematic and empirical nature of scientific inquiry.
Reflective analysis	Encourages self-evaluation and evidence-based assessment of practice, aligning with transparent, iterative, and evaluative scientific processes.

Students conduct research in preparation for their graduation, supported by several courses:

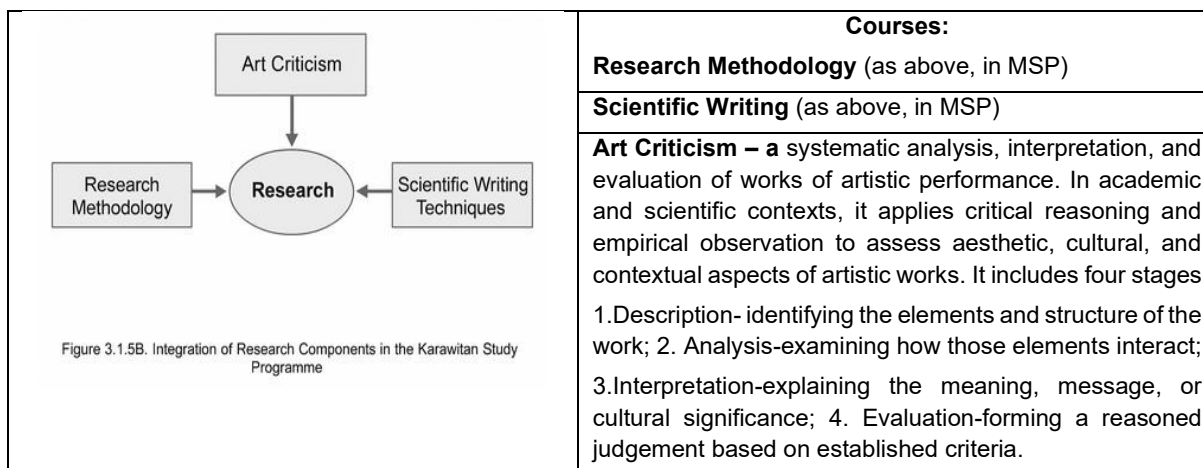


These courses cultivate critical and reflective approaches, aligning artistic inquiry with the scientific principles of systematic observation, verification, and accountability. The combination of research-based learning and professional engagement ensures that students not only master creative expression but also understand and apply academic rigour and methodological discipline in their field.

Karawitan Arts (KSP)

KSP offers two final project tracks: artistic creation and art analysis.

Prior to undertaking these projects, students complete courses such as Research Methodology, Art Criticism, Scientific Writing Techniques, and Seminars for analytical work (thesis), as well as Creation Methods, Nusantara Music Composition, and Industrial Music Composition for artistic creation.



In KSP, Art Criticism functions as a scientific and reflective method for studying Nusantara music, connecting artistic appreciation with analytical, objective, and evidence-based approaches.

Both the thesis and the artistic project are assessed through comprehensive examinations - written and performance-based respectively - under the supervision of a thesis advisor.

In addition, students actively participate as research and community service partners in projects led by faculty members. This collaboration provides hands-on experience in empirical research, data collection, documentation, and community engagement, thereby strengthening their methodological and academic competence.

Examination and final thesis*

Music Study Programme (MSP)

The Music Study Programme in the HEI applies examination rules consistent with institutional academic regulations. Lecture activities comprise both theoretical and practical components, as outlined in the curriculum.

All examinations and assessments are designed to measure the achievement of the programme's specific qualification objectives, including cognitive, affective, and psychomotor competencies relevant to the discipline.

Student performance is evaluated each semester through three types of assessments:

- Structured assessment (20%),
- Mid-semester examination (30%), and
- Final-semester examination (50%).

Structured assessments are conducted before and after the midterm examination, which is held in the eighth week of the semester, while the final examination takes place in the sixteenth week. Examination formats are determined by the course lecturer and may include papers, reports, essays, or performance-based assessments, carried out either individually or in groups.

The Final Project (Thesis) is a compulsory course worth 6 credits (9.06 ECTS) and serves as the culmination of the undergraduate programme. It integrates cognitive, affective, and psychomotor competencies, reflecting the student's overall academic and artistic development. To ensure effective implementation, guidelines for the preparation of the Final Project are provided for students, supervisors, examiners, study programmes, and faculty administrators. These guidelines regulate responsibilities and procedures to maintain consistency, transparency, and academic integrity throughout the process.

Karawitan Arts (KSP)

The Final Project (Thesis) for KSP must comply with the guidelines established by the programme. The process begins with the preparation of a research proposal, developed under the supervision of an appointed advisor. The Final Project and its examination are specifically designed to assess the attainment of the programme's special qualification objectives, integrating advanced cognitive, practical, and artistic competencies.

The proposal is then presented and defended before a panel of five examiners, including the two supervisors. Upon successful defence and approval, students proceed to either write a thesis or create a musical work (composition) in accordance with the approved proposal.

Following the completion and approval of the written thesis or performance examination, students may request a final examination date. The final results are graded as Pass, Pass with Revisions, or Fail. Detailed guidelines and procedures for conducting the final examination are provided.

Appraisal:

The curriculum adequately reflects the qualification objectives of both study programmes. The contents of the modules/courses are well-balanced, logically connected and oriented towards the intended learning outcomes. The areas of Music specialisations for each programme enable students to acquire additional competences and skills.

The degree and Indonesian programme names correspond to the contents of the curriculum and the programme objectives. Nevertheless, the English translations should be refined to ensure accuracy and consistency in international communication and in accordance with the Indonesian programme-naming regulation¹⁰: "Music" (instead of "Music Arts") study programme.

Therefore, to support the accuracy and consistency in the use of programme name the panel members **recommend** accreditation under fulfilment of the following **condition**:

The HEI consistently applies (in international contexts, websites, academic exchanges) the following programme names:

- "Music"
- "Karawitan Arts"

Theoretical questions are, where possible, explained by means of practical examples.

There is evidence that the programme qualifies for interdisciplinary thinking.

Ethical implications (for example those of economical or juridical ways of thinking and acting) are appropriately communicated.

Students acquire methodological competences and are enabled to do scientific work on the required level. All exams, as they are defined for the modules/courses, are suited in format and content to ascertain the intended learning outcomes. The requirements are in accordance with the desired qualification level. The exams are characterised by a wide variety of test formats. The final theses are evaluated based on previously published and coherently applied criteria, rules, and procedures. The students prove, especially in their thesis, their ability to do scientific work and the achievement of the study programme's qualification objectives.

¹⁰ according to the national programme-naming regulation as of September 9, 2025: Dirjen Dikti Decree No. 96/B/KPT/2025

	Exceptional	Exceeds quality requirements	Meets quality requirements	Does not meet quality requirements	n.r.
3.1 Contents					
3.1.1* Logic and conceptual coherence (Asterisk Criterion)			X		
3.1.2* Rationale for degree and programme name (Asterisk Criterion)				X condition	
3.1.3* Integration of theory and practice (Asterisk Criterion)			X		
3.1.4 Interdisciplinary thinking			X		
3.1.5 Ethical aspects			X		
3.1.6* Methods and scientific practice (Asterisk Criterion)			X		
3.1.7* Examination and final thesis (Asterisk Criterion)			X		

3.2 Structure

Modular structure of the study programme*

The curriculum of HEI was established by the Rector's Decree No. 566/IT7/KPT/2022, dated 19 July 2022, and is designed for a study duration of eight semesters.

Music Study Programme (MSP)

MSP is structured for a minimum of eight semesters with a maximum load of 144 credits. Each semester comprises 3.02–4.53 ECTS (equivalent to 2–3 credits) per course. Students must complete a minimum of 74 modules, with all courses delivered over a 16-week semester.

Projected study time	8 semesters
Number of credits (national credits and ECTS credits)	217
Workload per credit	3,02 or 4,53
Number of modules/courses	74 modules
Time required for processing the final thesis/project and awarded credits	One semester
Number of contact hours	1 credit = 170 minutes = 2,83 hours (50 minutes hours in class and 120 minutes selfstudy) for 16 classes

Karawitan Arts (KSP)

The Karawitan Art Study Programme is structured for a minimum of eight semesters with a maximum load of 144 credits. Students may select modules according to their individual interests and academic needs. Each module carries a specific credit value that reflects the workload required to complete it, which is equivalent to the time spent in lectures, practice sessions, and independent study.

Projected study time	8 semesters
Number of credits (national credits and ECTS credits)	217
Workload per credit	2-6 credits
Number of modules/courses	68 modules 16 classes (face to face)

Time required for processing the final thesis/project and awarded credits	One semester
Number of contact hours	1 credit = 170 minutes = 2,83 hours (50 minutes hours in class and 120 minutes selfstudy)

Study and exam regulations*

Music Study Programme (MSP)

Study and examination regulations are outlined in the Institution's Academic Guidebook, available to all students of HEI. Students must register each semester by paying tuition fees, completing registration forms, selecting courses, and consulting academic advisors. The number of courses a student may take depends on their previous Achievement Index (IP).

The average study workload is 16–20 credits per semester, equivalent to approximately 8–10 study hours per day (48–60 hours per week).

The final grade is determined in accordance with Rector's Regulation No. 700/IT.7/KPT/2022, which can be accessed via the following link¹¹: it classifies results as:

- Very Good, Good, Fair, Poor, or Fail

Value Range	Letter Grades	Number Value	Descriptor
91 - 100	A	4.00	Excellent
86 - 90	B+	3.50	Very good
80 - 85	B	3.00	Good
76 - 79	C+	2.50	Satisfactory
65 - 75	C	2.00	Fair
60 - 64	D	1	Poor
0 - 59	E	0	Failure

Students enrolled at other universities, including those participating in the *Merdeka Belajar–Kampus Merdeka* (MBKM) programme, may be eligible for the *Merdeka Student Exchange* (*Pertukaran Mahasiswa Merdeka – PMM*) scheme, which allows them to earn up to 20 credits in one semester.

Karawitan Arts (KSP)

The study programme is designed to be completed within four years, with students taking 19–22 credits per semester (equivalent to 28.69–33.22 ECTS).

In the first year: students study the theoretical and practical foundations of archipelagic music and introductory modules in Karawitan Art.

The second year focuses on advanced theory and practice, while the third year includes methodology, analysis, and Nusantara Music competency modules.

In the final year, students follow field studies, professional courses, complete a final thesis. Students receive academic supervision, administrative support, counselling, and access to library and studio or laboratory facilities. Learning quality is monitored by the Karawitan Arts Quality Group Team according to the Rector's Decree No. 700/IT7/KPT/2022¹².

¹¹ <https://www.isi-padangpanjang.ac.id/peraturan-akademik/>

¹² In accordance with the Rector's Decree, the further information is here: <https://www.isi-padangpanjang.ac.id/peraturan-akademik/>

Feasibility of study workload*

Music Study Programme (MSP)

The volume of study undertaken by a student in one semester is calculated based on the average time spent studying each day. Typically, students engage in academic activities for six to eight hours during the day and around two hours in the evening, amounting to

- approximately eight to ten hours per day (48 to 60 hours per week)
- the standard student workload ranges from 16 to 20 credits per semester (As one credit is equivalent to three hours of study per week)

Semester examinations do not permit repetition.

The total workload is assessed at the end of the eighth semester, coinciding with the final examination. Prior to this, the Head of Department meets with students to review any outstanding workload requirements, ensuring completion of a minimum of 138 credits, equivalent to approximately 208.38 ECTS.

The Average Credit Score (ATC), also known as the Achievement Index (IP), is used to determine each student's study load. The following regulations apply to this index.

Cumulative Average Semester	Grade (GPA)	Point Current	Next Semester's maximum workload	
			Credits	ECTS
3.00 – 4.00			22 – 24	33.22 – 36.24
1.75 – 2.99			19 – 21	27.18 – 31.71
1.50 – 1.74			16 – 18	22.65 – 25.67
1.00 – 1.49			13 – 15	18.12 – 21.14
0.75 – 0.99			10 – 12	13.59 – 16.61
0.00 – 0.74			9	12.08

Karawitan Arts (KSP)

The Karawitan Art Study Programme is designed to be completed within four years (eight semesters), offering 19–22 credits per semester or 28.69–33.22 ECTS. Module distribution follows the level and progression of study:

Year 1: Foundational theoretical and practical courses on archipelagic (Nusantara) music and introductory modules in Karawitan Art.

Year 2: Advanced theoretical and practical studies in archipelagic music.

Year 3: Courses in theory, practice, methodology, analysis, and Nusantara Music competencies.

Year 4: Field studies, professional practice, cluster participation, and completion of the final thesis.

Students are supported through comprehensive academic and administrative services, including academic advising, counseling, library, studio, and laboratory facilities.

The Karawitan Arts Quality Group Team evaluates learning quality through regular assessments of lecturers and students.

Equality of opportunity

Music Study Programme (MSP)

The Music Study Programme at ISI Padang Panjang promotes gender equality by ensuring equal opportunities and fair treatment for all students. The curriculum encourages balanced

participation in all learning activities, including practical courses involving large instruments such as drum sets, timpani, contrabass, and cello, thereby eliminating distinctions between male and female students. The programme also supports inclusivity for students with disabilities by providing appropriate facilities and adaptive approaches.

For example, students with mobility or hand limitations may be guided to develop alternative instrumental skills suited to their abilities. Educational success is therefore determined by talent and effort, not by gender or physical conditions.

Karawitan Arts (KSP)

The Karawitan Arts upholds gender equality and provides equal opportunities for all students. Both female and male students receive identical treatment and have equal access to all academic opportunities and resources offered by the programme.

The programme also welcomes students with certain disabilities, provided they are not deaf or speech-impaired, to study and develop their knowledge of Karawitan Art.

In addition, scholarships are available for outstanding students, particularly those from economically disadvantaged backgrounds.

Appraisal:

The programme structure supports the smooth implementation of the curriculum and helps students to reach the defined learning outcomes. The programme consists of modules/courses and assigns credits per module/course on the basis of the necessary student workload. Practical components, if existent, are designed and integrated in such a way that credits can be acquired. The module/course descriptions provide detailed descriptions of intended learning outcomes and the information defined in the ECTS Users' Guide.

There are legally binding study and exam regulations which contain all necessary rules and procedures and take into account, where applicable, national requirements.

The study programmes are designed so that students can study for a certain time at other HEIs or do internships without any extension of their overall study time.

The panel members **recommend** that the HEI develops a pilot version of a Diploma Supplement in the coming period to support international comparability of degrees.

The feasibility of both study programme's workload is ensured by a suitable curriculum design, by a plausible calculation of workload, by an adequate number and frequency of examinations, by appropriate support services as well as academic and general student counselling.

When reviewing the workload, the HEI takes into account evaluation findings, including student feedback and the programme's success rate.

The HEI ensures gender equality. At the same time HEI needs to develop, formalize, communicate, and implement clear regulations and procedures to support all students with special needs or disabilities, and to promote the principle of education for all.

Therefore, to support "education for all" principle, members **recommend** that HEI provides **equal opportunities for all prospective and current students and takes proactive measures to promote education for all, with particular priority given to students with disabilities.**

	Exceptional	Exceeds quality requirements	Meets quality requirements	Does not meet quality requirements	n.r.
3.2 Structure					

	Exceptional	Exceeds quality requirements	Meets quality requirements	Does not meet quality requirements	n.r.
3.2.1* Modular structure of the study programme (Asterisk Criterion)			X		
3.2.2* Study and exam regulations (Asterisk Criterion)			X		
3.2.3* Feasibility of study workload (Asterisk Criterion)			X		
3.2.4 Equality of opportunity				X	

3.3 Didactical concept

Logic und plausibility of the didactical concept*

Music Study Programme (MSP)

The Music Study Programme applies a constructivist, student-centred didactical concept that integrates two core teaching methods: case-based learning (CBL) and project-based learning (PBL). These approaches are grounded in constructivist and experiential learning theories, which emphasise active engagement, reflective practice, and the application of knowledge in authentic artistic contexts.

Grounded in experiential learning theory, PBL requires students to work on extended artistic and professional projects.

The Music Study Programme applies a didactical concept that integrates case-based and project-based learning methods to enhance student engagement and deepen understanding.

- Case-based learning enables students to analyze and solve practical problems in music production and management, including composition, orchestration, and arrangement.
- Project-based learning is applied in composition, orchestration, and professional practice courses, where students work individually and in groups to produce and present original musical works at the end of their studies.

Karawitan Arts (KSP)

The Karawitan Arts Study Programme adopts a constructivist, culturally contextualised didactical concept that likewise integrates case-based learning (CBL) and project-based learning (PBL). These methods are applied to cultivate deep cultural understanding, artistic mastery, and reflective practice based on both constructivist and experiential learning theories.

- Case-based learning involves analyzing and solving issues related to archipelagic (Nusantara) music, including musicology, popular music, research methods, and art criticism, enabling students to apply theoretical knowledge to practical cultural contexts.
- Project-based learning requires students to complete individual and group assignments in courses such as Nusantara and industrial music composition, performing arts management, and performing arts governance.

Through concept-based projects, students demonstrate instrumental mastery, artistic creativity, and performance management skills. These approaches promote mastery of instrumental techniques, creativity, and cultural understanding.

Course materials*

Music Study Programme (MSP)

MSP develops its course materials through a system of delegation, with each lecturer responsible - individually or in teams - for preparing and updating materials based on

evaluations of the teaching process. Course resources are continuously improved using current sources and e-learning platforms.

The programme employs several types of e-learning:

- Synchronous e-learning, such as online seminars or webinars, conducted in real time via platforms like Zoom or Microsoft Teams, enabling interactive discussion between lecturers and students.
- Asynchronous e-learning, which allows students to access materials at any time and from any location, provided by lecturers through linear e-learning systems.

This blended approach aims to enhance flexibility and facilitate effective, independent learning. There is an additional course material with the list of Learning and Performance Media (for Music and Karawitan Arts).

Karawitan Arts (KSP)

In the context of blended and distance learning, lecturers within the study programme develop and deliver learning materials using the Sevima¹³ Ed-Link and SIAKAD Cloud applications. Each lecturer, either individually or in teams, utilises these platforms in accordance with the development of archipelagic music studies.

Before lectures commence, learning materials are uploaded to the system. Assignments, quizzes, live conferences, and lecture scheduling are also managed through the same application. Courses currently delivered through the Ed-Link platform include Statistics, Riau Malay Music, and Performance Technique¹⁴.

Guest lecturers

Music Study Programme (MSP)

For the past two years, the Music Study Programme has hosted guest lecturers from outside the department through the *Practitioner Teaching* initiative. This programme is designed to foster active collaboration between expert practitioners and academic staff, facilitating meaningful exchanges of knowledge and professional experience between higher education and the creative industries.

These collaborations take place in both offline and online classes. Guest lecturers have recently contributed to three subjects simultaneously, providing valuable professional insights to students. The MSP recently benefited from the participation of several guest experts, who shared their insights with students across three courses simultaneously. The experts provided illustrative examples of on string instruments¹⁵ and the examples on piano and music composition¹⁶.

Karawitan Arts (KSP)

In previous years, guest lecturers in the Karawitan Arts were not scheduled in advance but were invited in connection with national and international events held in West Sumatra.

These lecturers were typically asked to deliver workshops during such events.

The guest lecturer programme is coordinated by the Department Student Association (HMJ) under the supervision of the Karawitan Arts. Invited speakers include professionals with expertise in art studies, artistic creation, performance, entrepreneurship, and digital media,

¹³ It is a company that provides integrated academic and administrative solutions for universities

¹⁴ <https://isipadangpanjang.siakadcloud.com/gate/menu#edlink>

¹⁵ String instruments: <https://www.facebook.com/reel/1005198207259480>

¹⁶ Piano instruments: <https://www.facebook.com/reel/279491064964193>.

contributing to the enhancement of students' knowledge and insight into archipelagic (Nusantara) music.

Lecturing tutors

Both programmes

Some students are trusted as assistants in lectures who are seniors of the students they will teach. Among them – students with piano, guitar and strings. To optimise student learning outcomes in both practical and theoretical areas, the programmes provide opportunities for senior students or student assistants (tutors) to deliver additional learning sessions outside the regular lecture schedule.

These supplementary sessions are proposed by the study programme and approved by the faculty after the competence of the student assistants has been verified. Selected assistants support lecturers in enhancing students' mastery and reinforcement of courses such as: Gandang Tambua, Rabab Pasisie, Nusantara Music Composition, Indang Pariaman, Dendang Minangkabau, and Dance Practice.

Appraisal:

The didactical concept of the study programme is described, plausible, and oriented towards the programme objectives. It allows for the application of different teaching and learning methods, such as, for instance, case studies or practical projects. Students are encouraged to take an active role in creating the learning process.

The accompanying course material lacks updated references, recommended publications, and art works. Therefore, the panel members recommend accreditation under fulfilment of the following **condition**:

The HEI updates course material references and reviews them annually to ensure alignment with the intended learning outcomes, qualification level, and academic standards.

Guest lecturers contribute to the students' qualification process by sharing their specialised experience, whether derived from professional practice or academic research—particularly within the fields of arts and culture. However, guest lectures currently take place only infrequently. Inviting lecturers through online platforms, or artists visiting the region, would be highly beneficial, particularly in developing opportunities for joint research. It is strongly recommended that both programmes regularly invite local and international guest lecturers to enhance the qualification process through their professional, academic, cultural, or political expertise.

Therefore, the panel members **recommend** that both programmes clearly define what constitutes a “guest lecturer” within their respective contexts.

Lecturing tutors support the students in the learning process and help them develop competences and skills.

	Exceptional	Exceeds quality requirements	Meets quality requirements	Does not meet quality requirements	n.r.
3.3 Didactical concept					
3.3.1* Logic and plausibility of the didactical concept (Asterisk Criterion)			X		
3.3.2* Course materials (Asterisk Criterion)				X	
				condition	
3.3.3 Guest lecturers				X	

	Exceptional	Exceeds quality requirements	Meets quality requirements	Does not meet quality requirements	n.r.
3.3.4 Lecturing tutors			X		

3.4 International outlook

International contents and intercultural aspects *

Music Study Programme (MSP)

MSP is committed to integrating international content and intercultural perspectives. Its curriculum has the internationally recognised principles and major theories in music studies. Students are encouraged to engage with courses in an international context, particularly those emphasising cultural and historical dimensions. This is reflected in music history courses covering the Baroque, Renaissance, Classical, Romantic, and Modern periods.

To strengthen the international dimension, the programme continually seeks to organise Master Classes across several divisions. These involve inviting experts and accomplished practitioners from various countries: Japan, Australia, Korea, and the United States, whose representatives demonstrate excellence in areas including strings, wind, piano, voice, and guitar performance.

Karawitan Arts (KSP)

International and intercultural elements are embedded throughout the Karawitan Art curriculum in a range of subjects, including Barzanji, Industrial Music Composition, English, Ethnomusicology, Creation Methods, Research Methods, Semiotics, Popular Music, Performing Arts Management, and Art and Technology.

These courses provide students with an understanding of the distinctive characteristics of world cultures, with particular emphasis on ethnic music traditions and the theoretical and methodological frameworks used in research and creative practice.

The integration of international content enhances students' knowledge and fosters interaction with global cultures, providing valuable opportunities for the advancement of archipelagic music studies. As a result, graduates are well equipped to engage professionally and creatively at local, national, and international levels.

International contents are an integral part of the curriculum. Students are thus prepared for the challenges in an international working environment. Through practical examples, students are enabled to act in an intercultural environment.

Internationality of the student body

Both Programmes

Both programmes hosted international students (Music study programme - from Africa, specialization: Basic Piano. Karawitan Art Study Programme – from Australia), but not during the recent time. In addition to the regular curriculum, HEI welcomes international participants through the Darmasiswa Programme, which attracts students from various countries seeking to study and experience Indonesian traditional music and culture.

Internationality of faculty

Music Study Programme (MSP)

To enhance the quality of the programme, the Music Study Programme actively involves international lecturers and expert practitioners. These collaborations include performances,

workshops, and master classes led by guest artists from abroad, contributing to the development of students' skills in composition, orchestration, and performance.

Karawitan Arts (KSP)

The Karawitan Arts employs lecturers who have earned qualifications from foreign institutions, such as the University Sains Malaysia (USM), and have gained international experience through participation in conferences and collaborative artistic projects.

Foreign language contents

Music Study Programme (MSP)

To enhance the quality of the programme, the Music Study Programme actively involves international lecturers and expert practitioners. These collaborations include performances, workshops, and master classes led by guest artists from abroad, contributing to the development of students' skills in composition, orchestration, and performance.

The main textbooks and reference materials are written primarily in English, as well as in Italian and German. Therefore, foreign language proficiency is essential for students to fully comprehend the course content.

Examples of key supporting books and resources include:

COURSE	BOOK	WRITER	PUBLISHER	YEAR
Music History	Music in The Western World: A History in Documents	Weiss, P. & Taruskin, R.	London: Coulter MacMillan Publisher	1984
Music Psychology	Psychological Foundations of Music	Radocy, R.E. and Boyle, J.D.	London: University of Chicago Press	1995
Basic Solfeggio	Solfège, ear training, rhythm, dictation, and music theory: a comprehensive course	M. A. Ghezzi, M. Powell	Amerika Serikat: University of Alabama Press	2005
Basic Music Theory	Music Theory	Gerge Tehaddeus Jones	Barnes & Noble Collage Outline Series, New York	1974
Basic Harmony	Elementary Harmony Theory and Practice	Robert W. Ottman	Prentice Hall INC., America	1961
Form and Analysis Music	Structure & Style: The Study and Analysis of Musical Forms	Leon Stein	Amerika Serikat: Summy-Birchard Music	1979

Karawitan Arts (KSP)

The Karawitan Arts Study Programme incorporates foreign-language elements in a manner appropriate to its academic focus. Foreign language components are used primarily for terminology related to course content and for accessing scholarly sources in languages other than Indonesian. This is particularly relevant for students engaging with literature in English to support research in archipelagic music.

Relevant courses that integrate foreign-language materials include Research Methods, Article Writing, Ethnomusicology, and Multimedia Composition, which makes use of English-language resources. In addition, certain traditional Islamic musical practices, such as Barzanji and Dikla

Rabano, involve the study and performance of texts in Arabic. The programme also includes English as a compulsory subject, ensuring that all students gain basic competence in reading and understanding international reference materials.

The extent of foreign-language use is aligned with the qualification level and disciplinary scope of the Karawitan Arts Study Programme. While the programme's primary focus remains on Indonesian and local musical traditions, the integration of foreign languages—though limited—is sufficient to support academic requirements and engagement with relevant international sources.

Appraisal:

International content is present in some modules, but not yet an integral part of the overall curriculum. The panel members recommend accreditation under fulfilment of the following **condition**:

The HEI must develop and implement a strategy to make international and intercultural dimensions an integral part of the curriculum, ensuring students are equipped for global artistic and professional engagement.

The general approach towards international composition of the student body corresponds to the programme concept, but the measures to promote internationality are not yet goal-oriented.

The panel members **recommend** to develop and implement clear, goal-oriented approaches to enhance the international composition of the student body in line with the programme concept. This may include targeted recruitment, international partnerships, joint programmes, mobility schemes, and increased visibility through participation in **international academic networks and conferences**.

The international composition of the faculty (teachers from different countries, teachers with international academic and professional experience) promotes the acquisition of international competences and skills.

The panel members **recommend** that, in order to enhance the **internationality of the faculty**, the HEI strengthen international collaboration by promoting joint research projects with both local and foreign institutions and by encouraging lecturers and students to participate in international conferences and professional organisations (e.g., the International Council for Traditions of Music and Dance (ICTMD), the British Forum for Ethnomusicology (BFE), the Society for Ethnomusicology (SEM), the European Seminar in Ethnomusicology (ESEM), and the International Musicological Society (IMS)).

The panel members **recommend for MSP** to enhance Language competencies to enable students to engage with international literature relevant to the programme. The use of foreign languages in instruction and materials should be better aligned with the programme's qualification objectives.

	Exceptional	Exceeds quality requirements	Meets quality requirements	Does not meet quality requirements	n.r.
3.4 Internationality					
3.4.1* International contents and intercultural aspects (Asterisk Criterion)				X condition	

	Exceptional	Exceeds quality requirements	Meets quality requirements	Does not meet quality requirements	n.r.
3.4.2 Internationality of the student body				X	
3.4.3 Internationality of faculty				X	
3.4.4 Foreign language contents			X KSP	X MSP	

3.5 Multidisciplinary competences and skills*

Music Study Programme (MSP)

The Music Study Programme supports the development of multidisciplinary competences through several components of its curriculum. Courses such as:

- Research Methodology, Creation Methodology, Music Technology, Music Education, and Recital Guidance

require students to integrate artistic, analytical, technological, and pedagogical skills.

A key element in fostering multidisciplinary abilities is the Real Work Course (KKN), a compulsory one-month institutional programme. In this activity, students from different departments work in mixed groups and are placed within local communities. They collaboratively design, implement, and deliver projects that address community needs. This experience strengthens students' understanding of social issues, civic engagement, and community-centred problem-solving while allowing them to apply disciplinary knowledge in a broader, interdisciplinary context.

Working with peers from various fields encourages the exchange of perspectives and promotes creativity and innovation. The collaborative environment enables students to integrate knowledge from different disciplines, develop a holistic approach to community challenges, and strengthen both soft skills (communication, teamwork, leadership) and discipline-specific competences. This multidisciplinary teamwork enhances students' ability to design effective solutions and to understand how their musical expertise contributes to wider social and cultural contexts.

To enhance the quality of the programme, the Music Study Programme actively involves international lecturers and expert practitioners. These collaborations include performances, workshops, and master classes led by guest artists from abroad, contributing to the development of students' skills in composition, orchestration, and performance.

Karawitan Arts (KSP)

The Karawitan Arts Study Programme also provides structured opportunities for students to develop multidisciplinary skills by combining theoretical and practical learning outcomes across the curriculum. Students are expected to develop a broad understanding of the performing arts ecosystem, including areas such as arts governance, entrepreneurship, and stage management.

This multidisciplinary approach supports the development of both soft and hard skills, helping students become independent, adaptable, and professionally competent in their field. Courses that foster such competences include:

- Community Service Programme (KKN), Seminar, Performing Arts Management, Entrepreneurship, Nusantara Music Composition, Public Communication, and Civic Education.

Through these courses, students learn to integrate artistic practice with managerial, communicative, and community-oriented skills.

Appraisal:

The students acquire communication and public-speaking skills as well as cooperation and conflict handling skills in accordance with the module/course descriptions. This is supported by means of suitable didactical and methodological measures.

The acquisition of further multidisciplinary competences, such as leadership skills and broad contextual knowledge, is ensured.

		Exceptional	Exceeds quality requirements	Meets quality requirements	Does not meet quality requirements	n.r.
3.5*	Multidisciplinary competences and skills (Asterisk Criterion)			X		

3.6 Skills for employment / Employability*

Music Study Programme (MSP)

The Music Study Programme supports graduate employability through a curriculum that equips students with the theoretical and practical skills required in the music profession. Practical modules develop:

- instrumental mastery and performance competencies,
- while courses in composition, multimedia music, and arrangement prepare students for roles in music production, creative industries, and arts entrepreneurship.

These skills are relevant to employment in music companies, production studios, educational settings, and independent creative practice.

The programme maintains active links with its alumni, who contribute to professional networks and provide opportunities for current students. Graduates have established or joined professional ensembles, orchestras, music schools, and entertainment companies in various regions, demonstrating strong career outcomes and leadership within the cultural and creative sectors.

Karawitan Arts (KSP)

Karawitan Arts prepares graduates for employment in fields related to archipelagic music, cultural performance, and creative entrepreneurship. Its curriculum, developed through national and international collaboration, includes modules such as

- English, Performing Arts Management, Music Composition, Entrepreneurship, and Public Communication.

These courses develop both artistic and managerial skills relevant to careers in cultural institutions, performance groups, community arts, and creative-industry initiatives.

Appraisal:

The promotion of employability – for instance through the integration of theory and practice and through the promotion of multidisciplinary competences and skills – runs as a common thread of the study programme through all its modules/courses.

		Exceptional	Exceeds quality requirements	Meets quality requirements	Does not meet quality requirements	n.r.
3.6*	Skills for employment / Employability (Asterisk Criterion)			X		

4. Academic environment and framework conditions

4.1 Faculty

Music Study Programme (MSP)

MSP is supported by a substantial and well-qualified teaching staff. A total of 53 lecturers contribute to the programme, comprising:

- 1 professor (serving as a practitioner lecturer), 8 lecturers holding doctoral degrees, and 44 lecturers holding master's degrees. Of these, 40 are civil-service lecturers, 8 are honorary staff, and 4 practitioners are active professional artists who bring current industry experience into the learning environment.

In terms of academic ranks, the programme includes 16 Associate Professors, 3 Assistant Professors, and 4 Lecturers. In addition, the programme benefits from the contribution of one distinguished guest lecturer, the internationally recognised pianist and composer Ananda Sukarlan, who enhances the academic and artistic profile of the programme.

This composition ensures that students receive instruction from staff with a balanced blend of academic expertise, pedagogical competence, and professional artistic practice.

Karawitan Arts (KSP)

The Karawitan Arts Study Programme is supported by a qualified academic team with diverse professional backgrounds. According to the staffing table, the programme employs:

- 1 Professor, 15 Associate Professors, 10 Assistant Professors, and 1 Tutor, amounting to a total of 27 lecturers.

This staff profile reflects strong capacity in both academic scholarship and artistic practice. The significant number of Associate and Assistant Professors supports high-level teaching, supervision, and research in traditional music, ethnomusicology, and performing arts. The presence of a full Professor provides additional academic leadership in curriculum development, scholarly activities, and community engagement.

Collectively, the teaching staff ensure that students are exposed to a range of expertise encompassing performance, composition, cultural studies, and the preservation and development of archipelagic musical traditions.

Structure and quantity of faculty in relation to curricular requirements*

Music Study Programme (MSP)

The Music Study Programme is delivered by a well-qualified team of 53 lecturers, comprising academics with strong scholarly backgrounds and professional artistic expertise. The staff body includes:

- 1 Professor (serving as a practitioner lecturer)
- 8 lecturers with doctoral degrees (PhD)
- 44 lecturers with Master's degrees (MA / MMus)
- 4 practitioner-artists contributing professional, practice-based expertise
- 40 civil-service lecturers, 8 honorary staff, and 1 guest lecturer

In terms of academic rank, the programme employs

- 16 Associate Professors, 3 Assistant Professors, and 4 Lecturers.

The involvement of the distinguished international pianist and composer as a guest lecturer further enhances the academic and artistic quality of the programme.

This composition ensures that students receive instruction from faculty members who combine academic qualifications, pedagogical competence, and active professional engagement in music performance, composition, and education.

Karawitan Arts (KSP)

The Karawitan Arts Study Programme is supported by a team of 27 lecturers with significant academic and professional credentials in traditional and archipelagic music. The staff body includes:

- 1 Professor
- 15 Associate Professors
- 10 Assistant Professors
- 1 Tutor

The academic qualification structure reflects strong institutional capacity for teaching, performance practice, research, and community-based artistic engagement. The large proportion of Associate and Assistant Professors strengthens the programme's ability to deliver advanced coursework, supervise research, and sustain scholarly development in the field of archipelagic music.

Academic qualification of faculty

Music Study Programme (MSP)

The Music Art Study Programme is supported by a team of lecturers holding doctoral and master's degrees across various disciplines of music and the arts.

- Lecturers with Doctoral Degrees

Based on the table, there are five (5) lecturers holding doctoral qualifications (S-3). Their academic positions range from *Assistant Expert (Asisten Ahli)* to *Associate Professor (Lektor Kepala)*, with corresponding functional ranks from *Penata Muda Tingkat I* to *Pembina Utama Muda*.

- Lecturers with Master's Degrees

There are twenty-two (22) lecturers holding master's qualifications (S-2) in fields such as music, ethnomusicology, and performing arts. Their academic positions range from *Assistant Expert (Asisten Ahli)* to *Associate Professor (Lektor Kepala)*, with functional ranks from *Penata Muda Tingkat I* to *Pembina Utama Muda*.

The total number of academic staff in the Music Art Study Programme is twenty-seven (27), comprising:

- 5 lecturers with doctoral degrees (S-3)
- 22 lecturers with master's degrees (S-2)

Karawitan Arts (KSP)

The academic criteria for appointing both permanent civil servant lecturers and permanent non-civil servant lecturers are adapted to the competencies and requirements of the Faculty and the Karawitan Art Study Programme. Recruitment is conducted in accordance with the following regulations:

Civil Servant Lecturer (CPNS) appointments follow Permenpan RB No. 27 of 2021, based on proposals submitted by higher-education institutions.

Government Employee Lecturers with Work Agreements (PPPK) are appointed under Permenpan RB No. 28 of 2021.

In addition, part-time lecturers are assigned a National Lecturer Identification Number (NIDN) and may teach across several study programmes.

The process of attaining the title of Professor in higher education complies with Permenpan RB No. 46 of 2013, Article 26. To enhance the quality of academic human resources, a Professor Acceleration Programme has been implemented. This initiative provides training in the preparation of reputable academic publications (indexed by Scopus) and is supported through international conference participation and inter-university cooperation in joint research projects

Pedagogical / didactical qualification of faculty*

Both programmes

Each lecturer holds a teaching qualification appropriate to his or her academic competence. National regulations require all lecturers to obtain a Lecturer Certification, which serves as formal recognition of their professional teaching competence.

To ensure continuous improvement of teaching quality, lecturers are required to participate in nationally regulated professional development programmes, including:

- Applied Approach (AA) training, and
- Improved Learning Techniques Skills (Pengembangan Keprofesian Berkelanjutan—PEKERTI training)

In addition to these mandatory trainings, universities actively promote further professional development. Lecturers are encouraged to participate in various capacity-building activities such as workshops on curriculum development, Outcome-Based Education (OBE), Outcome-Based Assessment (OBA), and other pedagogical and academic enhancement programmes aimed at strengthening teaching quality and alignment with national and international standards.

Practical business experience of faculty

Music Study Programme (MSP)

The professional and practical business experience of the lecturers aligns closely with the programme's objective to integrate theory and practice. Their industry engagement strengthens the relevance of the curriculum and enhances students' learning through exposure to real-world artistic and entrepreneurial activities.

Several MSP lecturers maintain active professional roles beyond their academic duties. Their professional activities span a wide range of music-related fields since the establishment of their respective enterprises, including:

- Piano tuning and service for various brands and models;
- Keyboard, vocal, and public-speaking instruction;
- Digital Performance Music training and children's music development programmes;
- Participation in international artistic events such as the Asia Expo at the National Kaohsiung Center for the Arts (Taiwan), National Concert Hall (Taipei), and concert tours in Perth, Sydney, Auckland, and Melbourne;
- Performances with well-known national artists and institutions, including the Erwin Gutawa Orchestra, Krisdayanti's Semesta Concert (Jakarta), Foresta Concert (Bandung), and Symphonisia III: Melodi Layar Perak (Jakarta);
- Participation in MGMP¹⁷ activities (Meeting of Cultural Arts Teachers);
- Operation of music-related businesses, including rental of performance rooms and recording studios equipped with instruments (drums, guitars, bass, keyboards) and sound systems.

¹⁷ MGMP (or alternatively: Subject Teachers' Working Group) or Musyawarah Guru Mata Pelajaran is an Indonesian professional forum for teachers of the same subject

These professional engagements significantly contribute to teaching quality by allowing lecturers to integrate contemporary industry practice, entrepreneurship, and artistic expertise into classroom instruction.

Karawitan Arts (KSP)

In addition to their academic responsibilities in teaching, research, and community service, lecturers in the Karawitan Arts actively participate in a broad spectrum of professional activities. Their expertise in ethnic and archipelagic (Nusantara) music is applied at both national and international levels, contributing to cultural exchange, artistic development, and the global visibility of traditional Indonesian music. Lecturers serve as:

- Researchers and composers of ethnic archipelago music in international and national contexts;
- Presenters in global academic seminars;
- Consultants for cultural events and artistic programme development;
- Contributors to the advancement and innovation of Nusantara performing arts.

These activities demonstrate strong competencies in artistic practice, cooperation, competitiveness, and entrepreneurship. Many lecturers also remain active in professional and cultural organisations, which further supports and enriches classroom teaching. Their industry involvement ensures that students experience a meaningful connection between theoretical coursework and practical artistic applications.

Internal cooperation*

Music Study Programme (MSP)

Internal collaboration is implemented to strengthen learning outcomes. Each course is taught by 2–4 lecturers with complementary expertise to ensure that course objectives are fully achieved.

- Theoretical courses are supported by lecturers competent in archipelagic arts and culture, research methods, and academic writing.
- Practical courses involve 3–4 lecturers working together across areas such as musical concepts, instrumental techniques, and skills development.

This team-teaching approach ensures that students benefit from diverse academic, artistic, and technical perspectives.

The programme also collaborates with other departments within the Faculty of Performing Arts - Theatre Arts, Television and Film, and Photography

to support performances, student final projects, and joint productions. These departments contribute to artistic direction, lighting, sound, stage management, documentation, and costumes. Technical facilities such as sound, lighting, and stage equipment are supported by UPT Ajang Gelar¹⁸.

Karawitan Arts (KSP)

The Karawitan programme also applies structured lecturer collaboration to enhance learning outcomes. Courses are jointly delivered by lecturers with expertise in Nusantara musical traditions, performance practice, composition, and cultural studies.

- In **theoretical learning**, collaboration focuses on ethnomusicology, cultural analysis, and research techniques.

¹⁸ UPT Ajang Gelar is an academic unit (Unit Pelaksana Teknis) within an Indonesian higher-education institution, designated to facilitate performance & exhibition activities in the arts and culture domain

- In **practical learning**, lecturers work together to guide students in instrumental mastery, traditional ensemble performance, creativity, and stage practice.

This collaborative model ensures strong integration of cultural knowledge, artistic skills, and performance competence across the curriculum.

Additional cooperation is carried out with internal departments:

- Theatre Arts, Dance, Television and Film, and Photography - in performance production, documentation, stagecraft, and cultural event development. This cross-departmental support strengthens artistic quality and facilitates the integration of theory, cultural knowledge, and practical performance.

Student support by the faculty*

Music Study Programme (MSP)

Each lecturer supervises a group of 10–15 students as an Academic Supervisor (PA), providing guidance on academic and non-academic matters. Students may consult their PA regarding learning difficulties, time management, writing and reporting challenges, resource access, motivation, or professional orientation. Supervisors also assist with personal issues such as financial concerns, accommodation, social adjustment, or family matters.

Support is offered through individual meetings, counselling, and coordination with academic and administrative units to ensure students receive appropriate solutions and continuous academic guidance.

Karawitan Arts (KSP)

Lecturers in the Karawitan programme also provide structured academic supervision to support students' academic progress and personal well-being. Consultations are available in person, by appointment, or through online channels including email, telephone, WhatsApp, and the SIARD/Cloud platform. Ongoing guidance helps students address academic challenges, cultural adaptation, and personal concerns, ensuring their successful development throughout the programme.

Student support in distance learning - n/r

Appraisal:

The structure and number of the faculty correspond to the programme requirements and ensure that the students reach the intended qualification objectives. The faculty's composition, consisting of full-time and part-time (visiting) lecturers, guarantees that both the academic standards and the requirements of professional practice are fully satisfied.

The academic qualification of the faculty corresponds to the requirements and objectives of the study programme. The HEI verifies the qualifications of the faculty members by means of an established procedure. Specific measures for the further qualification of the faculty members are implemented.

The panel **recommends** that the institution further encourage and support lecturers in pursuing full professorships, as this would strengthen the academic qualifications of the teaching staff and align with the long-term objectives of the study programmes.

The pedagogical and didactical qualification of the faculty correspond to the requirements and objectives of the study programme. The HEI verifies the qualifications of the faculty members by means of an established procedure. The HEI ensures that assessors are familiar with existing testing and examination methods and receive support in developing their own skills in

this field. Specific measures for the further qualification of the faculty members are implemented. The practical business experience of the faculty corresponds to the requirement of the programme to integrate theory and practice. The faculty members cooperate with each other for the purpose of tuning the modules/courses towards the overall qualification objectives. Meetings of all those teaching in the programme take place regularly. Student support is an integral part of the services provided by the faculty. It is offered on a regular basis and serves to help students study successfully.

	Exceptional	Exceeds quality requirements	Meets quality requirements	Does not meet quality requirements	n.r.
4.1 Faculty					
4.1.1* Structure and quantity of faculty in relation to curricular requirements (Asterisk Criterion)			X		
4.1.2* Academic qualification of faculty (Asterisk Criterion)			X		
4.1.3* Pedagogical / didactical qualification of faculty (Asterisk Criterion)			X		
4.1.4 Practical business experience of faculty			X		
4.1.5* Internal cooperation (Asterisk Criterion)			X		
4.1.6* Student support by the faculty (Asterisk Criterion)			X		
4.1.7(*) Student support in distance learning (only relevant and an Asterisk Criterion for blended-learning/distance learning programmes)					n/r

4.2 Programme management

Programme Director*

Music Study Programme (MSP)

The leadership of the Music Art Study Programme is grounded in institutional values, norms, ethics, and academic culture. The Program Head provides effective direction by articulating the programme's vision, making timely and policy-based decisions, and coordinating academic and administrative tasks across the department. Leadership is demonstrated through clear communication of goals, roles, and responsibilities to all lecturers and staff.

The selection and appointment of the Programme Head and Secretary follow the procedures of the Faculty Senate, which include:

1. the formation of an election committee by the Lecturers' Council;
2. administrative selection of candidates;
3. presentation of each candidate's vision and mission followed by a Q&A session;
4. selection by the Lecturers' Council and submission to the Rector for formal appointment.

Programme governance is regulated through the ISO 9001:2015 Standard Operating Procedure (SOP) and the Rector's Regulation No. 707/IT/KPT/2023 on the Appointment and Dismissal of Heads and Secretaries of Departments/Study Programmes (2023–2027)¹⁹.

Karawitan Arts (KSP)

¹⁹ The duties and functions of programme leadership are defined in Permendikbudristek No. 51/2022 concerning the Statute of Institut Seni Indonesia Padangpanjang

The Karawitan Programme Head leads the study programme with support from a Secretary, academic staff, and a quality assurance team. Key responsibilities include academic planning, internal coordination within HEI, external cooperation, and supervision of teaching, research, community service, and student activities. The Programme Head also ensures effective communication and coordination among lecturers and oversees administrative processes related to the programme.

Programme management follows institutional Standard Operating Procedures (SOP) set by the Dean of the Faculty of Performing Arts and the Rector of HEI. Based on these institutional regulations, the Programme Head develops programme - level SOPs and internal regulations that guide the technical implementation of all academic and administrative activities in the Karawitan Arts Study Programme.

Process organisation and administrative support for students and faculty

Music Study Programme (MSP)

The Music Art Study Programme provides administrative services to support students and lecturers through regulations and guidelines outlined in the Academic Handbook. Dedicated academic staff manage daily administrative tasks, including student administration, educational processes, and programme documentation. They are supported by PLP personnel who assist with lecture facilities and equipment, as well as administrative units at the Faculty of Performing Arts and the institutional level.

To strengthen management quality, academic and administrative staff, together with lecturers, participate in capacity-building activities such as:

- dissemination of Government Regulation (PP) No. 53 on ASN Discipline and its enforcement;
- training on course-code regulations and higher-education administrative procedures;
- socialization of bureaucratic reform initiatives in higher education; and
- community-building activities to promote a supportive academic environment within the programme.

Karawitan Arts (KSP)

The Karawitan Art Study Programme provides administrative services in line with the institutional Academic Guide²⁰, IT Personnel, and Educational Laboratory Staff (PLP - Pranata Laboratorium Pendidikan).

Each unit is responsible for different aspects of service:

- Administrative staff manage academic records and student administration.
- Educational Laboratory's staff support facilities, equipment, and lecture-related infrastructure.
- IT staff handle digital services and technology-based academic support.

Appraisal:

The programme director coordinates the activities of everyone involved in the programme and ensures that the programme runs smoothly.

Faculty members and students are supported by the administration in the organisation of the study programme. Sufficient administrative staff is available. Decision-making processes, authority, and responsibilities are clearly defined. Teachers and students are included in the decision-making processes where their areas of work are involved.

²⁰ Regulations in the academic Guide: <https://www.isipadangpanjang.ac.id/peraturan-akademik/>

The opportunities of electronic service-support are used and supplement personal one-to-one counselling. The HEI offers the administrative staff opportunities for continuous professional development.

	Exceptional	Exceeds quality requirements	Meets quality requirements	Does not meet quality requirements	n.r.
4.2 Programme management					
4.2.1* Programme Director (Asterisk Criterion)			X		
4.2.2 Process organisation and administrative support for students and faculty			X		

4.3 Cooperation and partnerships

Cooperation with HEIs and other academic institutions or networks

The Music Study Programme (MSP)

The Music Study Programme collaborates with a wide range of higher education institutions through Memoranda of Agreement (MoA) and Memoranda of Understanding (MoU) facilitated by Institute for Research and Community Service (LPPM or Lembaga Penelitian dan Pengabdian kepada Masyarakat).

Partner institutions include, among others:

- Lancang Kuning University; the Faculty of Administrative Sciences, Ganesha University of Education; Ekasakti University Padang; Jambi University; Baiturrahmah University; Muhammadiyah University of West Sumatra; Batusangkar State Islamic Religious University; Institut Seni Indonesia Denpasar; Institut Seni Budaya Indonesia Aceh; Jakarta Arts Institute; ISBI Bandung; ISBI Tanah Papua; ISI Surakarta; the University of North Sumatra; Pembangunan Nasional Veteran University Jakarta; the Polytechnic of Creative Media; Universitas Negeri Medan; Institut Seni Indonesia Yogyakarta; Universitas Universal; Universitas Bung Hatta; and Universitas Palangka Raya.

These collaborations support the implementation of the Tri Dharma of higher education - teaching, research, and community service - while strengthening academic resources and encouraging the dissemination of scholarly output.

To promote public engagement and enhance the visibility of the programme, lecturers and students actively present artistic works in national and international forums. Examples include:

- Festival Teater Week Nanjing, China (2018);
- The musical accompaniment for the a traditional Minangkabau dance, performed in France (2018);
- Opera Malin Kundang, UNIMAS Sarawak, Malaysia (2018); The Hague, the Netherlands (2018); Germany; Belgium;
- Couleurs d'Indonésie Festival, France (2018) and Sawahlunto International Music Festival, Indonesia (2018)

Cooperation with business enterprises and other organisations*

Music Study Programme (MSP)

Both programmes

Both Programmes maintain active cooperation with domestic government agencies, cultural organisations, and industry partners as well as cultural organisations, creative industries, and

community institutions to strengthen academic quality, support artistic development, and expand opportunities for students and staff.

Programmes maintain extensive cooperation with domestic government agencies to enhance the quality of education, human resource development, and the advancement of the arts. Partnerships have been established with institutions such as

- the Padang Pariaman Regency Government, South Solok Regency Government, Bengkulu Provincial Government, Pesisir Selatan Regency, Mentawai Islands Regency, West Pasaman Regency, the West Sumatra Provincial Government, Sawahlunto City Government, Dharmasraya Regency Government, PT Bank BRI Padangpanjang Branch, the Padangpanjang District Attorney's Office, and Gebu Minang.

These partnerships jointly contribute to improving educational quality and strengthening the programmes' visibility and societal impact

Appraisal:

The scope and nature of cooperation with HEI, other academic institutions and networks relevant for the programme are plausibly presented. The agreements forming the basis of the cooperation are documented. The cooperation is actively pursued and has a clear impact on the conception and implementation of the study programme. All such activities contribute to the development of the students' qualification and skills.

The scope and nature of cooperation with business enterprises and other institutions relevant to the programme are plausibly presented. The agreements forming the basis of the cooperation are documented. The cooperation is actively pursued and has a clear impact on the conception and implementation of the study programme. All such activities contribute to the development of the students' qualification and skills.

	Exceptional	Exceeds quality requirements	Meets quality requirements	Does not meet quality requirements	n.r.
4.3 Cooperation and partnerships					
4.3.1(*) Cooperation with HEIs and other academic institutions or networks (Asterisk Criterion for cooperation programmes)			X		
4.3.2(*) Cooperation with business enterprises and other organisations (Asterisk Criterion for educational and vocational programmes, franchise programmes)			X		

4.4 Facilities and equipment

Quantity, quality, media and IT equipment of teaching and group rooms*

Music Study Programme (MSP)

The existing facilities are sufficient to accommodate 286 students, providing adequate space for individual and group practice. The lecturers' workrooms meet the required standards for teaching, research, and academic development. The programme has:

- 3 large rooms (108 m² for ensemble/orchestra, 60 m² for percussion, 36 m² for guitar);
- 5 medium rooms (60 m² each) for studio, multimedia, harmony, score reading, and piano classes;
- 36 rooms for two lecturers (192 m² each) for woodwind and brass classes;

- 36 individual rooms for wind, piano, and vocal practice.

The total area amounts to 38,664 m²

Additional facilities also include the student association (HMJ) room, auditorium and performance hall (used for concerts and final exams), and the Reading Room and Library reading room, which provides books, scholarly works, and digital media. The UKM Laboratory is equipped with computers supporting courses in Sound Exploration and Music Technology.

Karawitan Arts (KSP)

KSP provides comprehensive facilities to support the learning and research activities of both students and lecturers. These facilities are jointly managed by the Karawitan Arts Study Programme and the main HEI's integrated facilities. They include lecture and seminar rooms, instrument and equipment rooms, music practice studios, theory classrooms, libraries, performance stages, organology lab and recording studios, as well as supporting infrastructure such as parking areas, canteens, mosques, and reliable internet access.

Access to literature*

Music Study Programme (MSP)

The academic library of HEI serves as a central support system for higher education, and it is often called the "heart of the university" because it supports the three pillars of higher education: (1) Education and Teaching, (2) Research and (3) Community Service.

At HEI, the library supports all these functions by providing access to artistic and academic resources, including musical scores, recordings, art journals, design references, and research materials. Academic Library Unit is located between the Rectorate Building and the Campus Café, - serving as the main academic information center on campus. Library has the following opening hours:

- Monday-Thursday: 08:00 – 16:00 (break 12:00 – 13:30)
- Friday: 08:00 – 16:30 (break 12:00 – 14:00)

During examination periods, the library may extend its operating hours to support students.

Digital services are available 24 hours a day through the online portal:

<https://library.isi-padangpanjang.ac.id/>

The ISI Padangpanjang Library provides comprehensive access to printed and digital resources across multiple disciplines, particularly in the arts, music, and cultural studies.

- Library Holdings and Online and Digital Resources

The collection includes:

- 30,922 books
- 3,475 work reports
- 3,332 periodicals and journals
- 1,198 theses
- 1,130 research reports
- 697 audiovisual materials (audio, video, and multimedia formats)

In the library lecturers of both programmes - MSP and KSP - have the access to publications indexed in SINTA²¹ or Scopus, which are considered essential for supporting academic and research excellence.

²¹ SINTA (Science and Technology Index) is the official national research indexing system of Indonesia, managed by the Ministry of Education, Culture, Research, and Technology (Kemendikbudristek). It plays a crucial role in evaluating and promoting research quality across Indonesian universities and higher education institutions.

Table 4.4.2 The examples of recommended journals to be published

Research Title	Journal Rank and Name
Yunaidi <u>Transformation of Lapau's Social Space to The Creation of a Rantau Maimbau - Rantau Ketek Composition</u>	Global Journal of Arts, Humanities, and Social Sciences (2025)
Asril Bapereih Tanlovi: G'Arbiy Sumatra Orolida Pariaman Shahridagi Ganda Tasa An'anaviy Musiqa Festivali Uslubi	Proceedings of the International Scientific-Practical Conference (Uzbekistan) 2025
<u>Structure</u> <u>Creative Musical Work "Galuik Balam" in the Aesthetic Context of Minangkabau Traditional Music</u>	Q1 Journal of Research Journal in Advanced Humanities (2025)
<u>Andar Senses Literature</u> <u>Aesthetic Dialectics: Lack And Invulnerability In The Dunuch Performance</u>	Q Global Journal of Arts, Humanities and Social Sciences (2024)
Andar Senses Literature Batu Baruang: Megalithic Stone Chime Music in Luhak 50 Koto, Minangkabau, Indonesia	Q1 Journal of Evolutionary Studies in Imaginative Culture (2024)
Asril Music Gamad: Experiencing the legacy of Portuguese music in Indonesia Roots	Q1 Journal Research Journal in Advanced Humanities (2024)
Arif Anas Spiritual Dimensions And Ideological Content In The Tabuik Tradition Of The Pariaman Community	Q Global Journal of Arts Humanity and Social Sciences (2023)
Asril The Performance Concepts of Adu-Tandiang in Pariaman Society: Fighting, Competing, and Fighting/Competing as Main Characteristics	Q1 Journal of Art Discourse (2024)

The library maintains extensive electronic and digital services accessible via the official website:

- E-Book collections; E-Journal databases; E-Learning platform; Institutional Repository (containing student theses and research works); Digital Archives (Arsip Digital); External Research Databases. HEI is connected to several national and international research platforms:
- OneSearch Indonesia (integrated library network)
- E-Resources PERPUSNAS (National Library of Indonesia e-resources)
- Indonesian research database for higher education (Garuda Kemdikbud)

The catalog includes print and electronic resources (currently 93 titles of electronic media). HEI manages its own online journal platform, providing open-access scholarly publications in the arts and culture fields.

Key Journals in the Field of Music:

- Musica: Journal of Music
- Jurnal Musik Etnik Nusantara
- Other journals related to music, performance, and cultural arts

Besides the main university library, the Music Study Programme provides also access to

- The reading room, located in the lecturers' area, offers reference materials and theses from previous graduates

Karawitan Arts (KSP)

In order to improve students' access to literature, the Karawitan Art Study Programme and HEI have

- (a) a reading room,
- (b) an audio-visual arts room,
- (c) an institutional library and good internet access for students to search, read references and literature, and access internet media related to traditional music studies, performing arts and general science.

The information about literature is provided²²:

In the Karawitan Arts, forums are held to analyse research findings and critical reviews (on a monthly or bi-monthly basis, while in the Music Study Programme, "the Music by Boundaries" initiative focuses on ethnomusicology and international collaborations in music research and performance.

Appraisal:

The quantity, quality, media and IT facilities of the teaching rooms meet the standards required for the programme, even taking into account the resource needs of other study programmes. The rooms are properly equipped for disabled students and give them barrier-free access. Access to the internet via wireless LAN is provided free of charge. A sufficient number of group rooms is available.

In addition, technical support is offered to students during normal working hours.

Services for adequate support of the participants are documented. The requirements for students' work-station at home are listed (e.g. technical IT-equipment).

The panel members **recommend** accreditation under fulfilment of the following **condition**:

The HEI ensures the provision of barrier-free access and adequately equipped teaching and group rooms for students with disabilities, in line with accessibility standards.

In addition, the panel members suggest to improve room acoustics of the facilities used by the Music Study Programme.

The opening hours of the library with the extended hours of work during the examination time and online access take students' needs sufficiently into account. Access to the literature and journals as well as to digital media (e.g. electronic media, databases) is ensured. The literature expressly required for the study programme is available in the library and also kept up to date.

	Exceptional	Exceeds quality requirements	Meets quality requirements	Does not meet quality requirements	n.r.
4.4 Facilities and equipment					
4.4.1* Quantity, quality, media and IT equipment of teaching and group rooms (Asterisk Criterion)				X	condition
4.4.2* Access to literature (Asterisk Criterion)			X		

²² <https://www.isi-padangpanjang.ac.id/unit-pelaksana-teknis/perpustakaan/>

4.5 Additional services

Career counselling and placement service

Music Study Programme (MSP)

Students receive support in career counselling, study planning, and professional preparation. Career development is integrated into the curriculum, particularly through the *Professional Work* course, and is complemented by institutional tracking services. Academic Advisors play an active role in motivating students, encouraging them to pursue relevant opportunities and guiding them towards suitable employment or entrepreneurial paths. The programme also facilitates work opportunities for students in line with their skills.

Karawitan Arts (KSP)

The Karawitan programme provides counselling, study planning, and career guidance through the university's Career and Counselling Centre. Its main functions include:

1. offering academic and non-academic guidance;
2. assisting students in selecting study pathways (art studies or creative practice);
3. supporting human resource development; and
4. providing training and career development services.

Alumni Activities

Both programmes

Both the Music Art and Karawitan Arts Study Programmes maintain active engagement with their alumni through institutional alumni associations and dedicated digital networks. Communication is supported through social media, online platforms, and regular programme updates, ensuring that alumni remain connected to academic and artistic developments.

Alumni from both programmes contribute to academic and artistic activities through performances, collaborative projects, cultural events, and professional networking. They also support current students through mentoring, workshops, and career-related activities. Many graduates work as performers, educators, cultural practitioners, or entrepreneurs, while others contribute to creative industries and cultural organisations. Ongoing digital communication and alumni initiatives help strengthen the relationship between graduates and the programmes.

Appraisal:

Career counselling and placement services are offered to the students and graduates to promote their employability.

The panel members **recommend** enhancing the career and placement services by organising job fairs, offering guidance on CV writing and job applications, and expanding support to better prepare students and graduates for the labour market.

The HEI provides sufficient resources. An alumni organisation has been set up with the aim of developing an alumni network.

		Exceptional	Exceeds quality requirements	Meets quality requirements	Does not meet quality requirements	n.r.
4.5	Additional services					
4.5.1	Career counselling and placement service			X		
4.5.2	Alumni Activities			X		

4.6 Financing of the study programme*

Music Study Programme (MSP)

The programme is financed through a Performance-Based Budgeting system, which links expenditure directly to planned outputs, outcomes, and institutional Key Performance Indicators (KPIs) as stated in HEI's strategic plan.

Since 2019, budgeting has followed the national Performance Accountability System for Government Agencies. Funding sources include:

- Public Service Agency (BLU) funds,
- Pure Rupiah (RM) allocations, and
- State Sharia Securities (SBSN) from 2023 onwards.

These funding streams cover operational costs, salaries and allowances (RM 001), office and maintenance needs (RM 002), revitalization and infrastructure (SBSN), and support for tuition subsidies and academic activities through BOPTN. Faculty-level allocations are channeled to study programmes according to institutional budgeting policies.

Karawitan Arts (KSP)

Financing for the Karawitan Arts Study Programme is based on institutional revenue planning, including student development fees, research collaborations, and other legally sourced income. Main funding streams include:

- Non-Tax State Revenue (PNBP),
- Operational Assistance for Higher Education (BOPTN),
- Various Scholarships (Bidikmisi/KIP-K, PPA, BRI scholarships, BUMN scholarships, and BAZNAS support)

Additional revenue is generated through research services, artistic productions, training activities, and performance services delivered in collaboration with various partners. These resources ensure stable funding for academic operations, student support, and programme development.

Appraisal:

The income related to the programme ensures that each cohort of students starting within the accreditation period can complete the study programme.

		Exceptional	Exceeds quality requirements	Meets quality requirements	Does not meet quality requirements	n.r.
4.6*	Financing of the study programme (Asterisk Criterion)			X		

5. Quality assurance and documentation

Quality assurance and quality development with respect to contents, processes and outcomes*

The Music Study Programme (MSP)

MSP operates under the Internal Quality Assurance System (SPMI) of HEI, implemented across all faculties and study programmes since the first cycle (2019–2023). The system is supported by institutional documents – its Policy, Manual, Standards, and Forms - which are adapted for programme-level application.

Quality assurance activities include monitoring, evaluation, and internal quality audits (AMI) covering both academic and non-academic aspects. The Quality Control Group (GKM) within the Faculty of Performing Arts oversees the implementation of quality assurance in MSP, ensuring compliance with institutional standards and fostering continuous improvement in teaching, learning, and student outcomes.

Karawitan Arts (KSP)

KSP implements quality assurance through the Institution for Educational Development and Quality Assurance (LP3M), which conducts annual monitoring, evaluation, and internal audits (SPMI). At faculty level, quality processes are coordinated by the Quality Assurance Board (BAPEM), while at programme level, the Quality Control Group (GKM) monitors academic activities and reports results to LP3M. The Internal Quality Audit (AMI) evaluates fifteen key areas, including curriculum, learning processes, graduate outcomes, research, facilities, and ethics. Evaluation reports are reviewed by LP3M auditors, who provide feedback and recommendations for continuous improvement. This systematic approach ensures that KSP maintains high academic standards and aligns outcomes with institutional quality objectives.

Instruments of quality assurance

Music Study Programme (MSP)

The Music Study Programme applies two key quality assurance instruments:

- work instructions (IK) and procedure manuals (SOPs).

Work instructions outline specific steps to ensure that departmental tasks are completed accurately and consistently. The Quality Assurance Procedures Manual defines objectives, scope, processes, and documentation standards for all academic and administrative activities, supporting the continuous improvement of learning quality and graduate outcomes.

Karawitan Arts (KSP)

The Karawitan Arts conducts regular student evaluations each semester through the academic portal, coordinated by the Quality Control Group (GKM). These evaluations cover course content, teaching quality, learning infrastructure, and academic support. The results are discussed at programme, faculty, and institutional levels and submitted to the Institution for Educational Development and Quality Assurance (LP3M) for further review and follow-up. Each student receives a programme handbook outlining academic regulations, course structures, and final examination requirements, which serves as a reference during academic advising and contributes to ongoing quality enhancement.

Evaluation by students

Music Study Programme (MSP)

The Music Study Programme applies quality assurance instruments including work instructions (IK) and procedure manuals (SOPs). These documents define clear processes for teaching, monitoring, and evaluation. Student feedback on course content, delivery, and learning outcomes is gathered each semester and forms part of the internal quality assurance process managed by the Quality Control Group (GKM). Evaluation results are reviewed by the department to improve teaching quality and student learning experiences

Karawitan Arts (KSP)

In the Karawitan Arts, student evaluations are conducted each semester through the academic portal, coordinated by the Quality Control Group (GKM). The evaluations cover course planning, content, delivery, facilities, and academic support. Results are analysed and reported to the programme chair, faculty, and the Institution for Educational Development and Quality Assurance (LP3M) for follow-up actions. Each student also receives a programme handbook to support academic guidance and ensure transparency in learning requirements.

Evaluation by faculty

Both programmes

Both the Music Study Programme (MSP) and the Karawitan Arts Study Programme (KSP) conduct regular, semester-based evaluations of academic staff and student performance. Lecturers report their teaching, research, and community service activities through the Faculty Performance Report (LKD) on the Sister system, where the submissions are reviewed by appointed assessors.

The evaluation results are used to guide improvements in teaching quality, curriculum development, academic planning, and overall programme performance. Regular meetings within each programme ensure continuous feedback, alignment with institutional standards, and progress towards achieving programme objectives.

External evaluation by alumni, employers and third parties

Both programmes.

Both the Music Study Programme (MSP) and the Karawitan Arts (KSP) conduct regular alumni tracer studies led by the Quality Control Group (GKM) with support from alumni associations. Feedback from alumni and employers, collected through questionnaires and online platforms, assesses curriculum relevance, graduate employability, and job alignment. The results are analysed and discussed at programme and faculty levels to inform curriculum development and continuous quality improvement.

Programme documentation

Programme description*

Music Study Programme (MSP)

Both the Music Study Programme (MSP) and the Karawitan Arts (KSP) maintain systematic documentation of all academic activities. Records are archived in hardcopy and digital formats, accessible to faculty, students, and support staff.

Softcopy documentation is stored on institutional platforms such as the ISI Padangpanjang website, university's digital academic management system (SIKAD), I-Learn, and Integrated Human Resource Information System (Sister), ensuring transparency and accessibility. Curriculum materials, including Semester Learning Plans (RPS), are available through these portals and can be accessed by authorised users via their respective accounts.

The information on the Music Study Programme is provided at the website²³.

Karawitan Art (KSP)

Academic activities are documented by the faculties and study programmes. Hard-copy documents are stored in departmental archives, while soft-copy documentation is maintained on the I-Learn and Sister platforms, which are accessible to faculty members, students, and support staff.

Curriculum documentation, including the Semester Learning Plans (RPS), is available through the Sister portal. These materials can be accessed by authorised users: students, lecturers, and administrative staff - via their individual accounts.

Information on activities during the academic year

Both programmes

Both the Music Study Programme (MSP) and the Karawitan Arts (KSP) disseminate information on academic and non-academic activities through the institution's academic calendar, which serves as a guideline for all units. The following link – is a calendar about activities during the academic year: <https://www.isi-padangpanjang.ac.id/kalender-akademik/>

At the programme level, information is shared via the ISI Padangpanjang website, social media platforms (WhatsApp, Facebook, Instagram, YouTube), and printed materials such as banners, pamphlets, and notice boards. Announcements include lectures, academic events, student achievements, and institutional activities organised by the department, faculty, and university.

Appraisal:

A quality assurance and development procedure of the programmes with respect to its contents, processes, and outcomes, has been set up. It takes into account the evaluation results, success rate, and graduate employment as well as the profile of the student population. Faculty members and students participate in the respective committees to plan and assess the quality assurance and development procedures.

However, the procedures should still ensure that the actual workload required for each course corresponds to the allocated credit points (ECTS) and reflects students' learning experiences. Therefore, **the panel members recommend** accreditation under fulfillment of the following **condition**:

The HEI pays greater attention to the implementation and communication of quality assurance procedures, particularly with regard to student workload in satisfaction surveys. Clear regulations must ensure anonymous student feedback and provide a structured follow-up process for lecturers based on the survey results.

Evaluation by the students is carried out on a regular basis and in accordance with a prescribed procedure; the outcomes are communicated to the students and provide input for the quality development process.

Quality control by the faculty is carried out on a regular basis and in accordance with a prescribed procedure; the outcomes are communicated and provide input for the quality development process.

²³ available at: <https://www.isi-padangpanjang.ac.id/fakultas/fakultas-seni-pertunjukan/prodi-seni-musik>

An external evaluation is carried out on a regular basis and in accordance with a prescribed procedure; the outcomes are communicated and provide input for the quality development process. The study programme's content, curriculum and examination scheme have been suitably documented and published (e.g. course plan and exam regulations).

The HEI regularly publishes current news and information – both quantitative and qualitative – about the study programme.

	Exceptional	Exceeds quality requirements	Meets quality requirements	Does not meet quality requirements	n.r.
5.1* Quality assurance and quality development with respect to contents, processes and outcomes (Asterisk Criterion)				X condition	
5.2 Instruments of quality assurance					
5.2.1 Evaluation by students			X		
5.2.2 Evaluation by faculty			X		
5.2.3 External evaluation by alumni, employers and third parties			X		
5.3 Programme documentation					
5.3.1* Programme description (Asterisk Criterion)			X		
5.3.2 Information on activities during the academic year			X		

Quality profile

HEI: ISI Padangpanjang

Bachelor programmes: Music and Karawitan Arts Study Programmes

		Exceptional	Exceeds quality requirements	Meets quality requirements	Does not meet quality requirements	n.r.
1	Objectives					
1.1*	Objectives of the study programme (Asterisk Criterion)			X		
1.2*	International orientation of the study programme design (Asterisk Criterion)			X		
1.3	Positioning of the study programme					
1.3.1	Positioning of the study programme in the educational market			X		
1.3.2	Positioning of the study programme on the job market for graduates („Employability“)			X		
1.3.3	Positioning of the study programme within the HEI's overall strategic concept			X		
2	Admission					
2.1*	Admission requirements (Asterisk Criterion)			X		
2.2	Counselling for prospective students			X		
2.3*	Selection procedure (if relevant)			X		
2.4(*)	Professional experience (if relevant; Asterisk Criterion for master programmes that require professional experience)					X
2.5*	Ensuring foreign language proficiency (Asterisk Criterion)				X condition	
2.6*	Transparency and documentation of admission procedure and decision (Asterisk Criterion)			X		
3	Contents, structure and didactical concept					
3.1	Contents					
3.1.1*	Logic and conceptual coherence (Asterisk Criterion)			X		
3.1.2*	Rationale for degree and programme name (Asterisk Criterion)				X condition	
3.1.3*	Integration of theory and practice (Asterisk Criterion)			X		
3.1.4	Interdisciplinary thinking			X		
3.1.5	Ethical aspects			X		
3.1.6*	Methods and scientific practice (Asterisk Criterion)			X		
3.1.7*	Examination and final thesis (Asterisk Criterion)			X		
3.2	Structure					
3.2.1*	Modular structure of the study programme (Asterisk Criterion)			X		

		Exceptional	Exceeds quality requirements	Meets quality requirements	Does not meet quality requirements	n.r.
3.2.2*	Study and exam regulations (Asterisk Criterion)			X		
3.2.3*	Feasibility of study workload (Asterisk Criterion)			X		
3.2.4	Equality of opportunity				X	
3.3	Didactical concept					
3.3.1*	Logic and plausibility of the didactical concept (Asterisk Criterion)			X		
3.3.2*	Course materials (Asterisk Criterion)				X Condition	
3.3.3	Guest lecturers				X	
3.3.4	Lecturing tutors			X		
3.4	Internationality					
3.4.1*	International contents and intercultural aspects (Asterisk Criterion)				X Condition	
3.4.2	Internationality of the student body				X	
3.4.3	Internationality of faculty				X	
3.4.4	Foreign language contents			X Karawitan	X Music	
3.5*	Multidisciplinary competences and skills (Asterisk Criterion)			X		
3.6*	Skills for employment / Employability (Asterisk Criterion)			X		
4.	Academic environment and framework conditions					
4.1	Faculty					
4.1.1*	Structure and quantity of faculty in relation to curricular requirements (Asterisk Criterion)			X		
4.1.2*	Academic qualification of faculty (Asterisk Criterion)			X		
4.1.3*	Pedagogical / didactical qualification of faculty (Asterisk Criterion)			X		
4.1.4	Practical business experience of faculty			X		
4.1.5*	Internal cooperation (Asterisk Criterion)			X		
4.1.6*	Student support by the faculty (Asterisk Criterion)			X		
4.1.7(*)	Student support in distance learning (only relevant and an Asterisk Criterion for blended-learning/distance learning programmes)					n/r
4.2	Programme management					
4.2.1*	Programme Director (Asterisk Criterion)			X		
4.2.2	Process organisation and administrative support for students and faculty			X		
4.3	Cooperation and partnerships					

		Exceptional	Exceeds quality requirements	Meets quality requirements	Does not meet quality requirements	n.r.
4.3.1(*)	Cooperation with HEIs and other academic institutions or networks (Asterisk Criterion for cooperation programmes)			X		
4.3.2(*)	Cooperation with business enterprises and other organisations (Asterisk Criterion for educational and vocational programmes, franchise programmes)			X		
4.4	Facilities and equipment					
4.4.1*	Quantity, quality, media and IT equipment of teaching and group rooms (Asterisk Criterion)				X condition	
4.4.2*	Access to literature (Asterisk Criterion)			X		
4.5	Additional services					
4.5.1	Career counselling and placement service			X		
4.5.2	Alumni Activities			X		
4.6*	Financing of the study programme (Asterisk Criterion)			X		
5	Quality assurance and documentation					
5.1*	Quality assurance and quality development with respect to contents, processes and outcomes (Asterisk Criterion)				X condition	
5.2	Instruments of quality assurance					
5.2.1	Evaluation by students			X		
5.2.2	Evaluation by faculty			X		
5.2.3	External evaluation by alumni, employers and third parties			X		
5.3	Programme documentation					
5.3.1*	Programme description (Asterisk Criterion)			X		
5.3.2	Information on activities during the academic year			X		